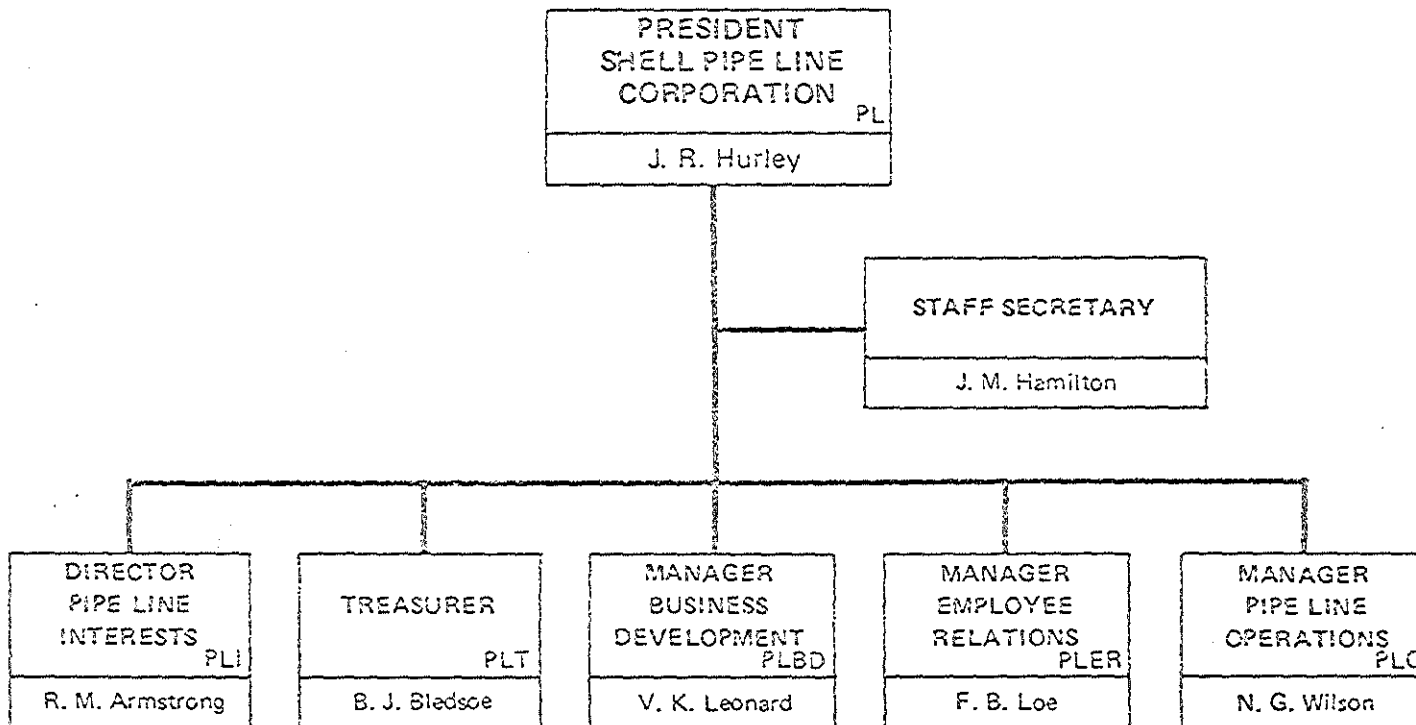
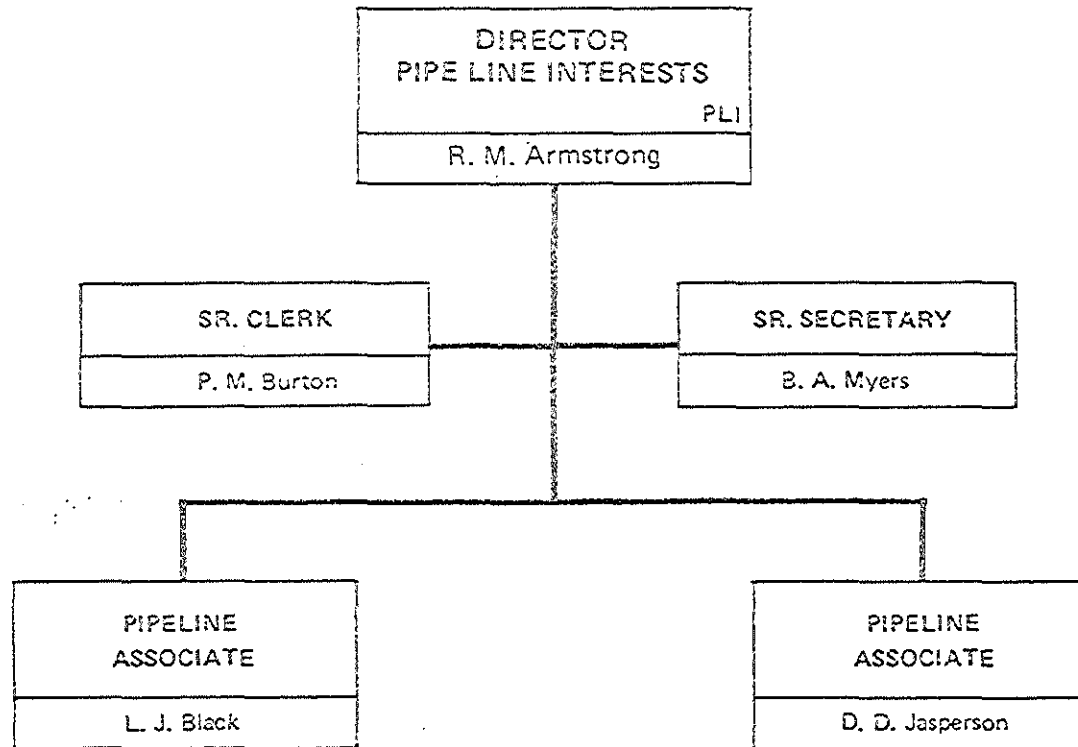


RAV

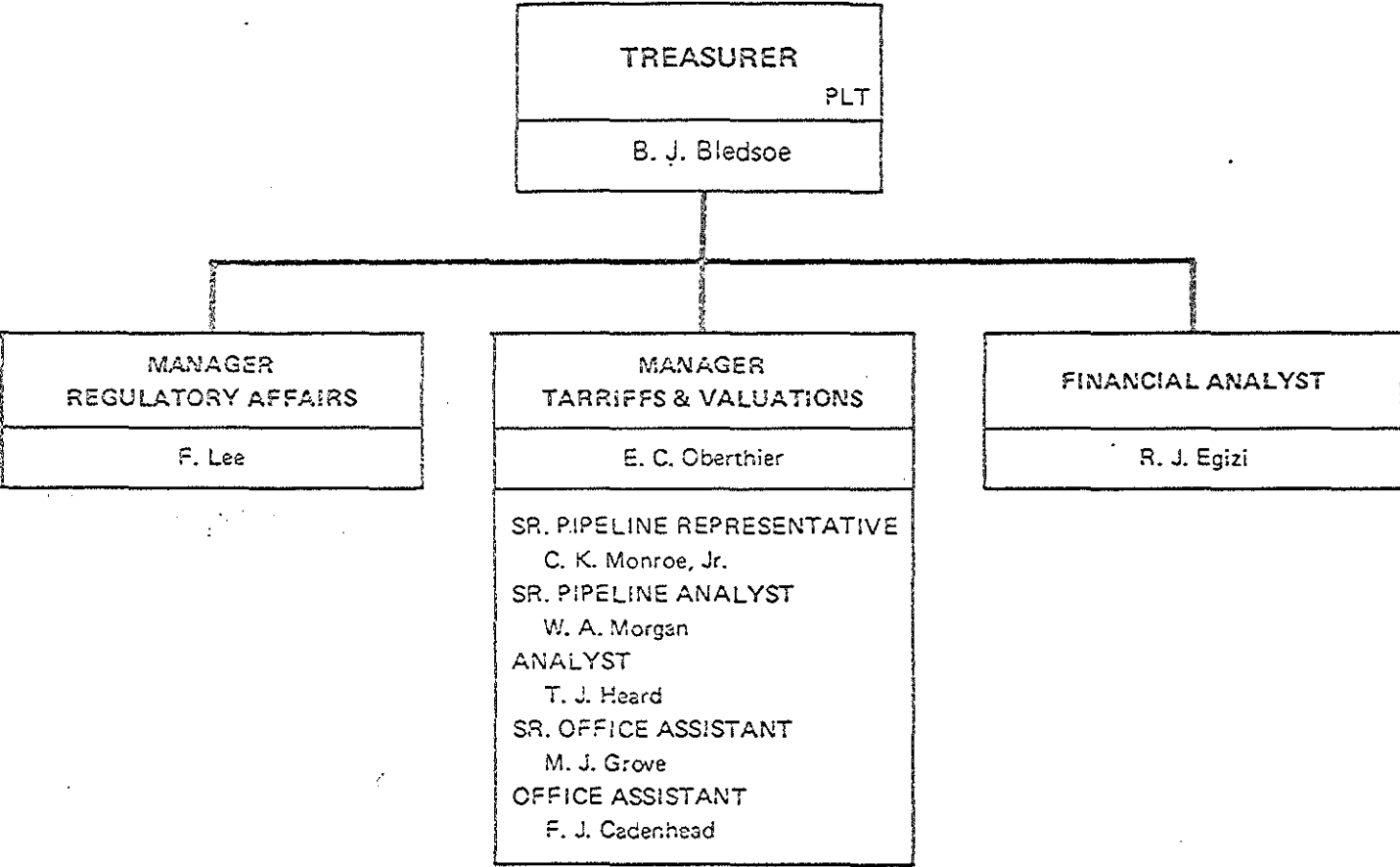
SHELL PIPE LINE CORPORATION PIPE LINE ADMINISTRATION



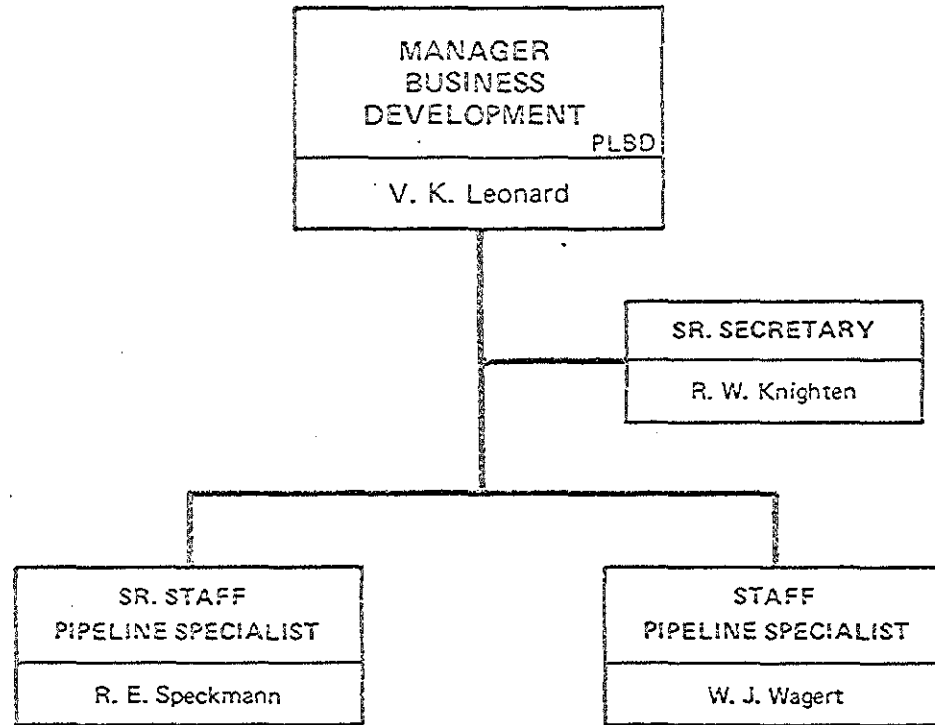
SHELL PIPE LINE CORPORATION
PIPE LINE INTERESTS



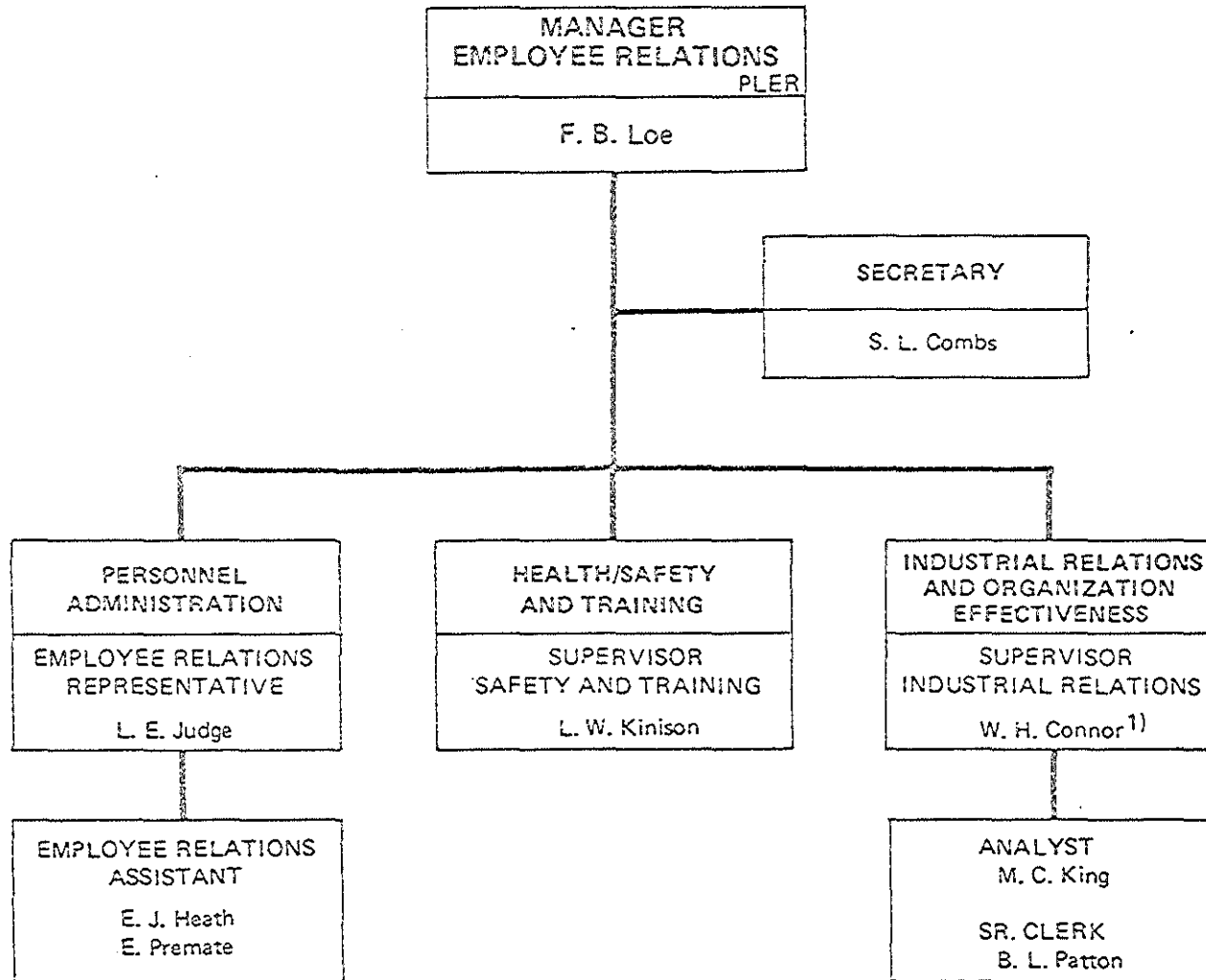
SHELL PIPE LINE CORPORATION
TREASURER



SHELL PIPE LINE CORPORATION
BUSINESS DEVELOPMENT

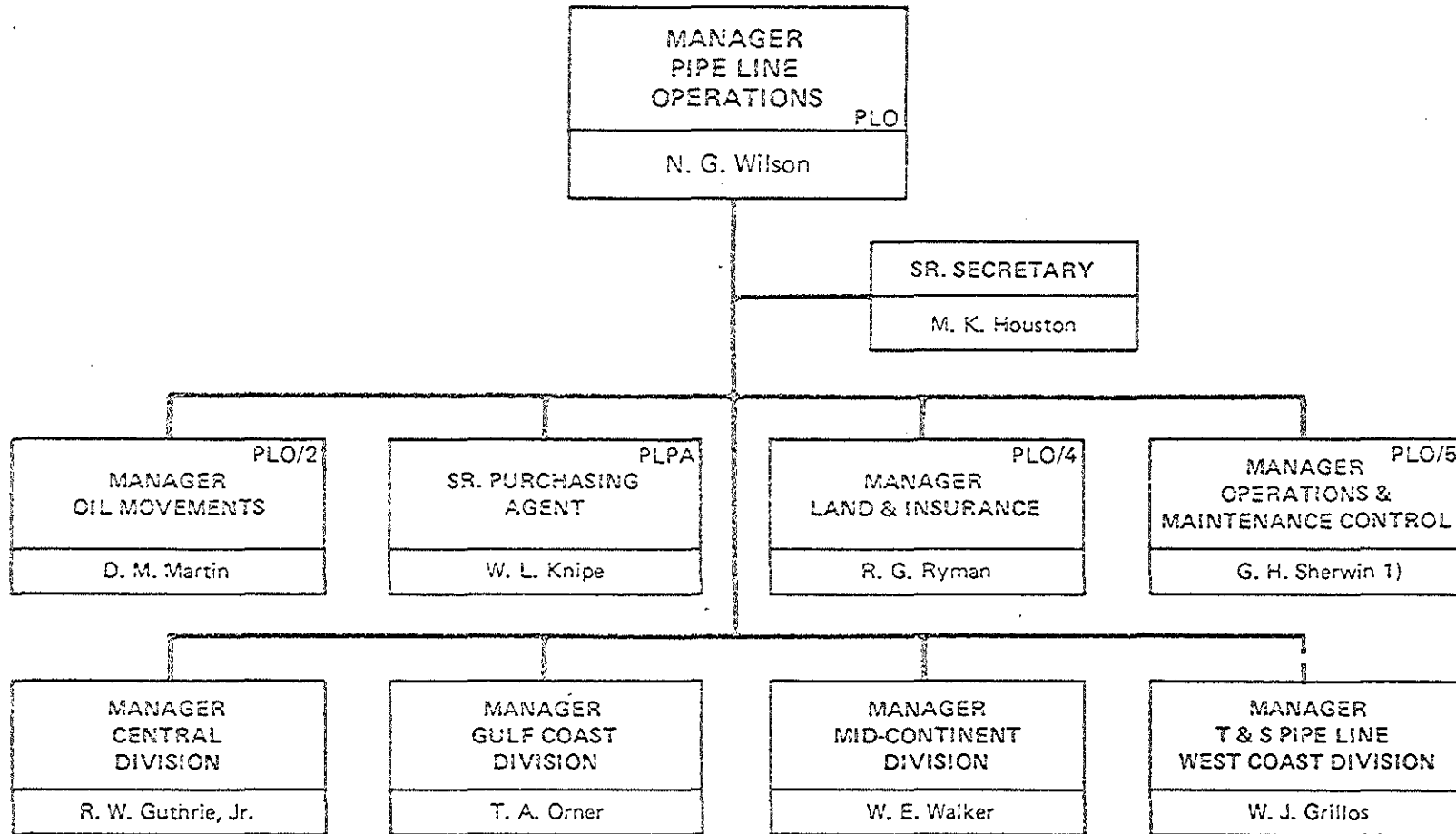


SHELL PIPE LINE CORPORATION EMPLOYEE RELATIONS



1) Alternate in absence of Manager

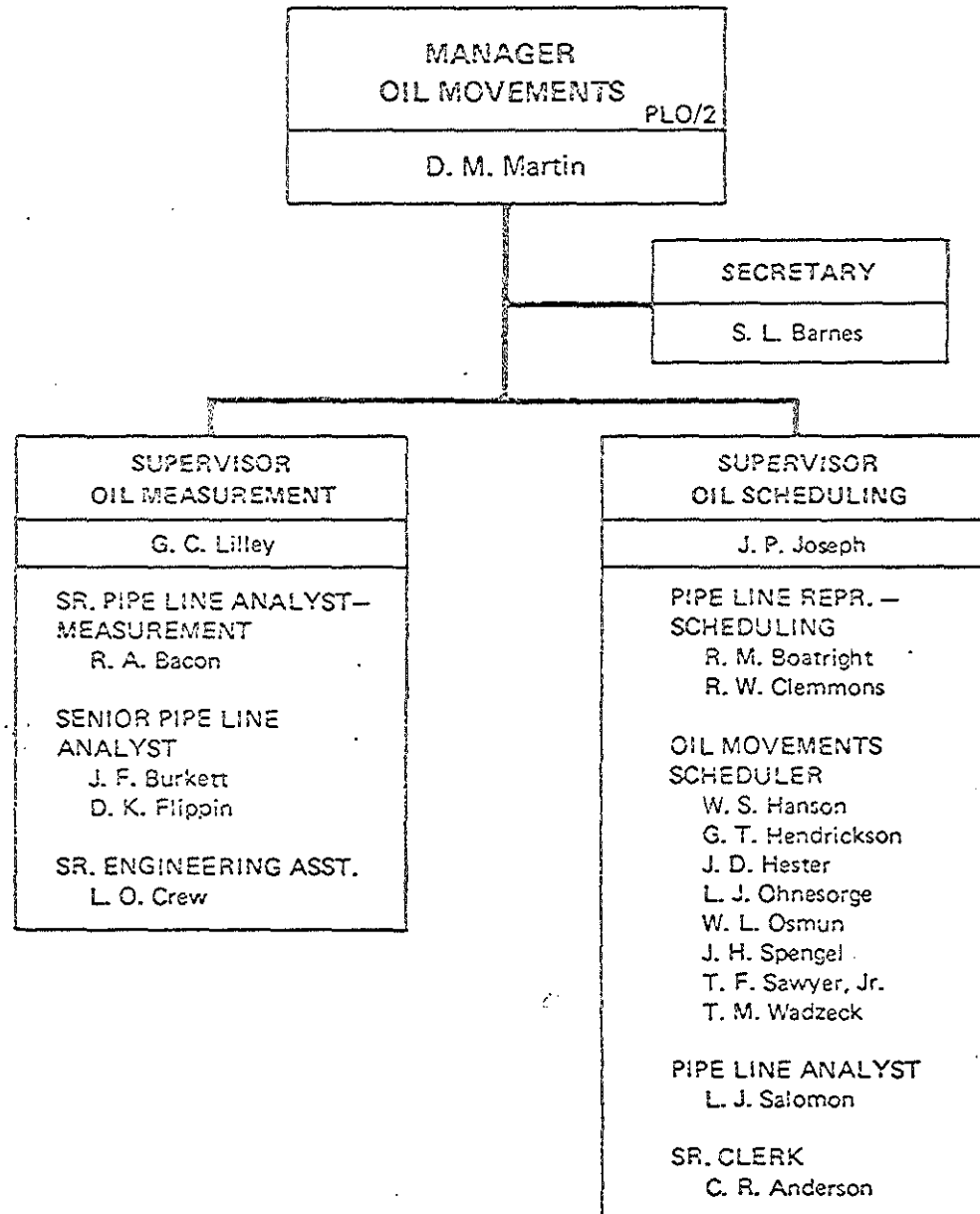
SHELL PIPE LINE CORPORATION PIPE LINE OPERATIONS



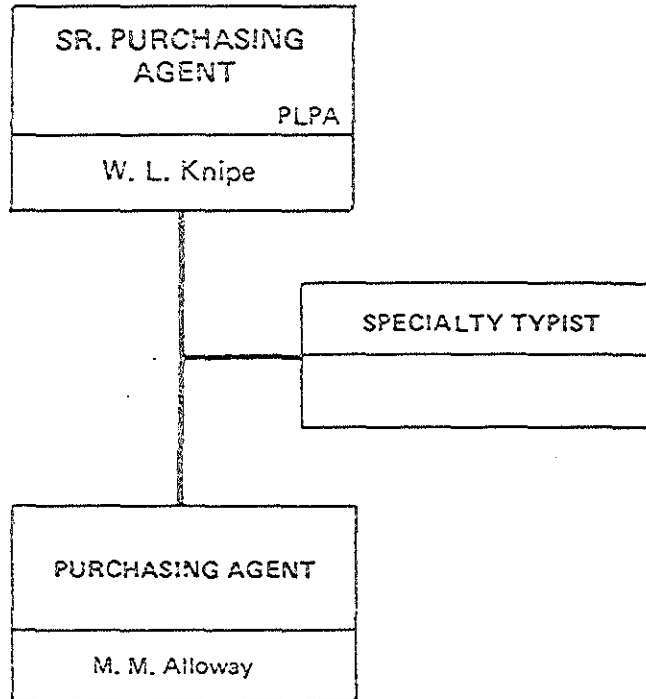
1) Alternate to Manager Pipe Line Operations

--- Receives management advice and services from Manager Pipe Line Operations

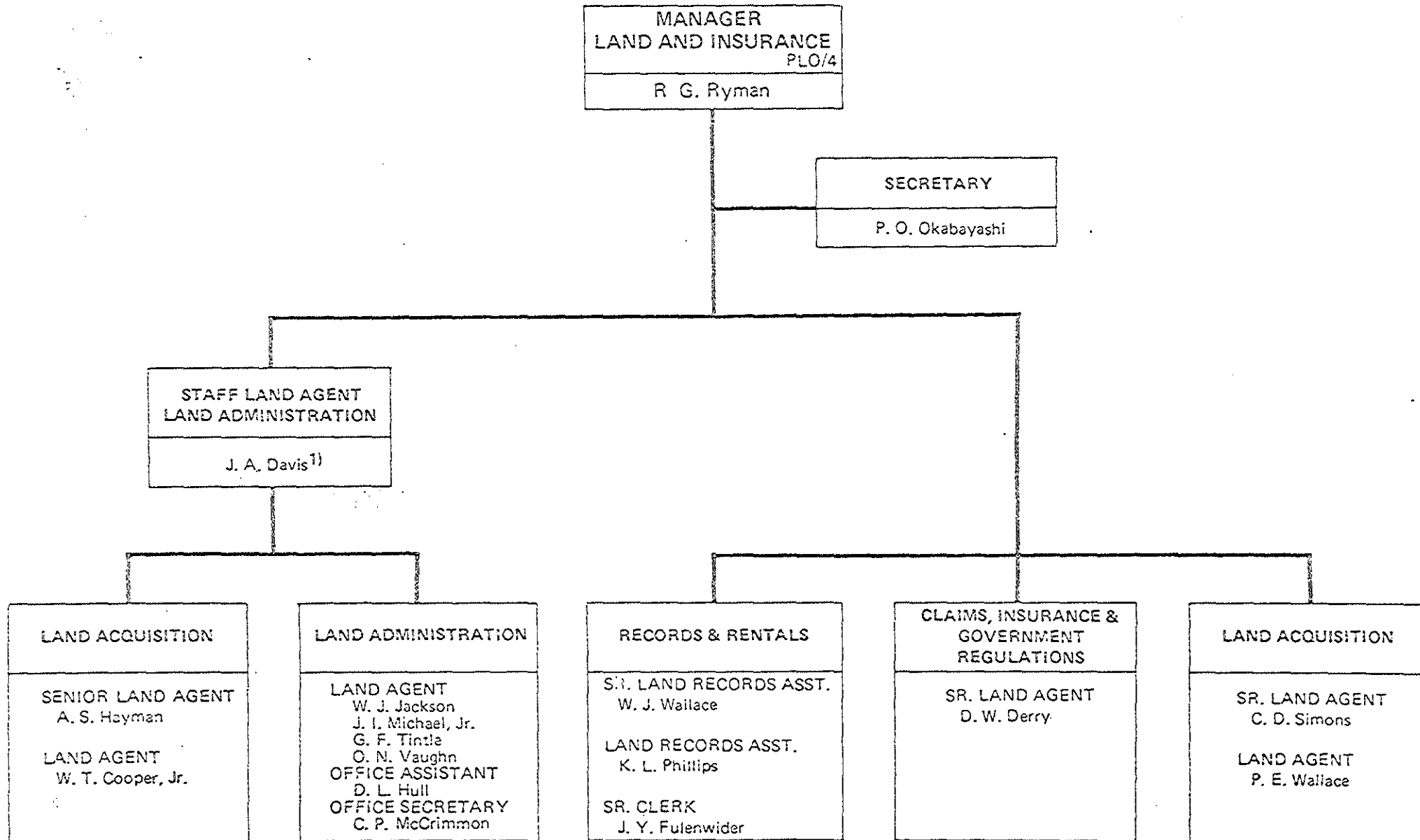
SHELL PIPE LINE CORPORATION
OIL MOVEMENTS



SHELL PIPE LINE CORPORATION
PURCHASING

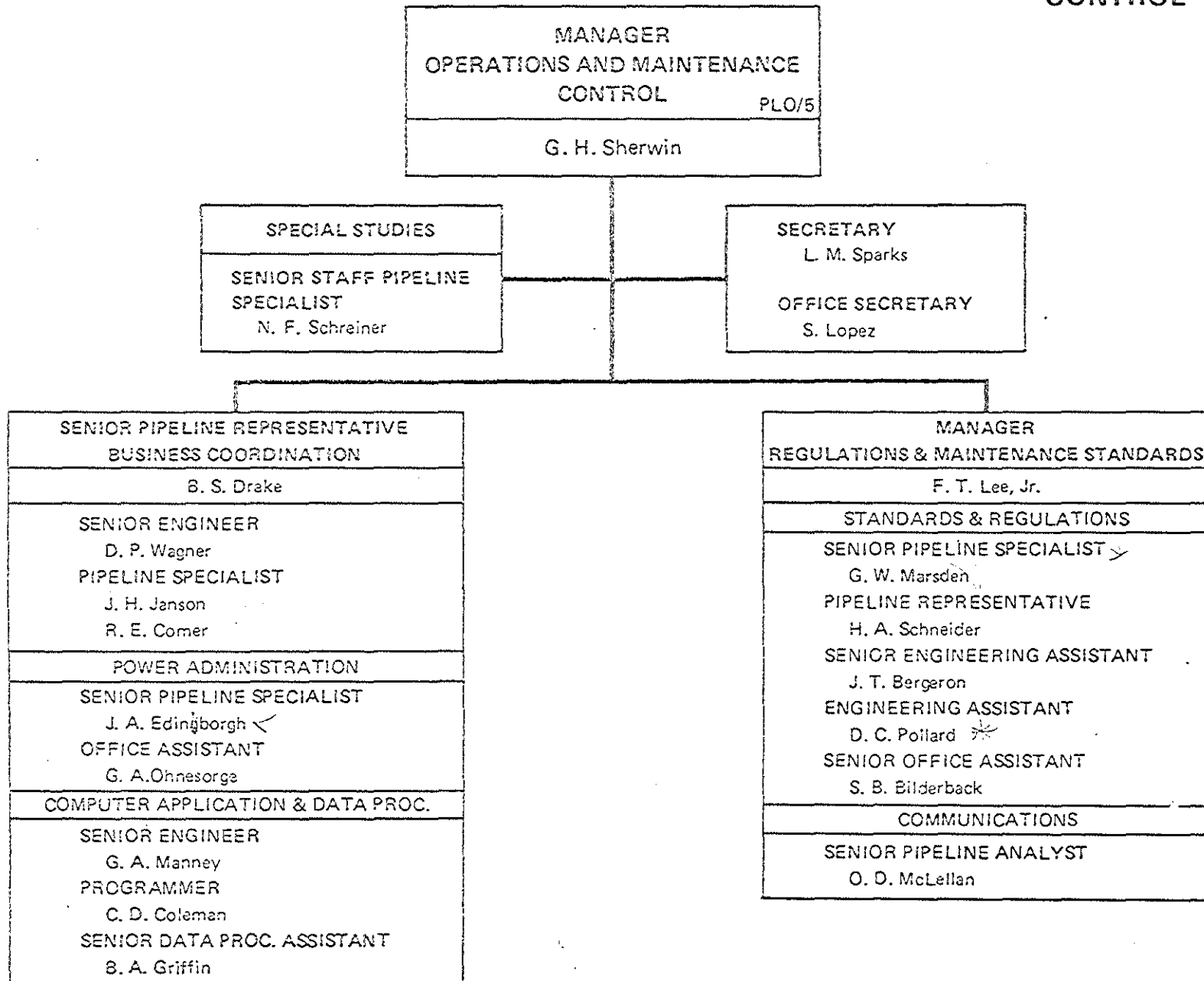


**SHELL PIPE LINE CORPORATION
LAND AND INSURANCE**

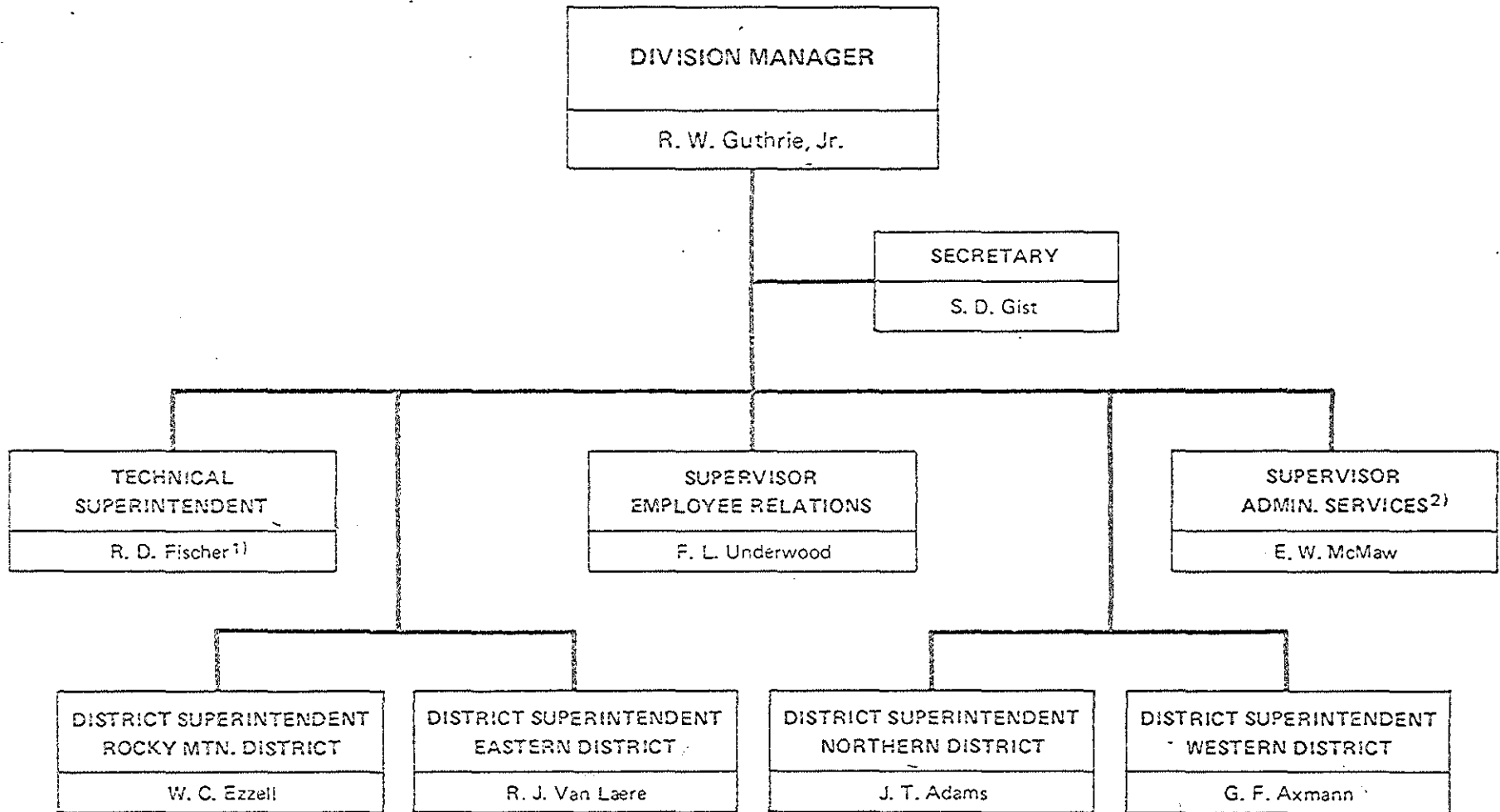


1) Alternate in absence of Manager
STAFF PERSONNEL - 17

SHELL PIPE LINE CORPORATION OPERATIONS AND MAINTENANCE CONTROL



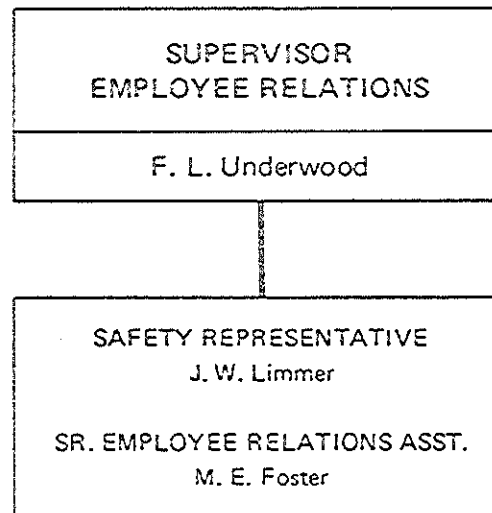
SHELL PIPE LINE CORPORATION CENTRAL DIVISION



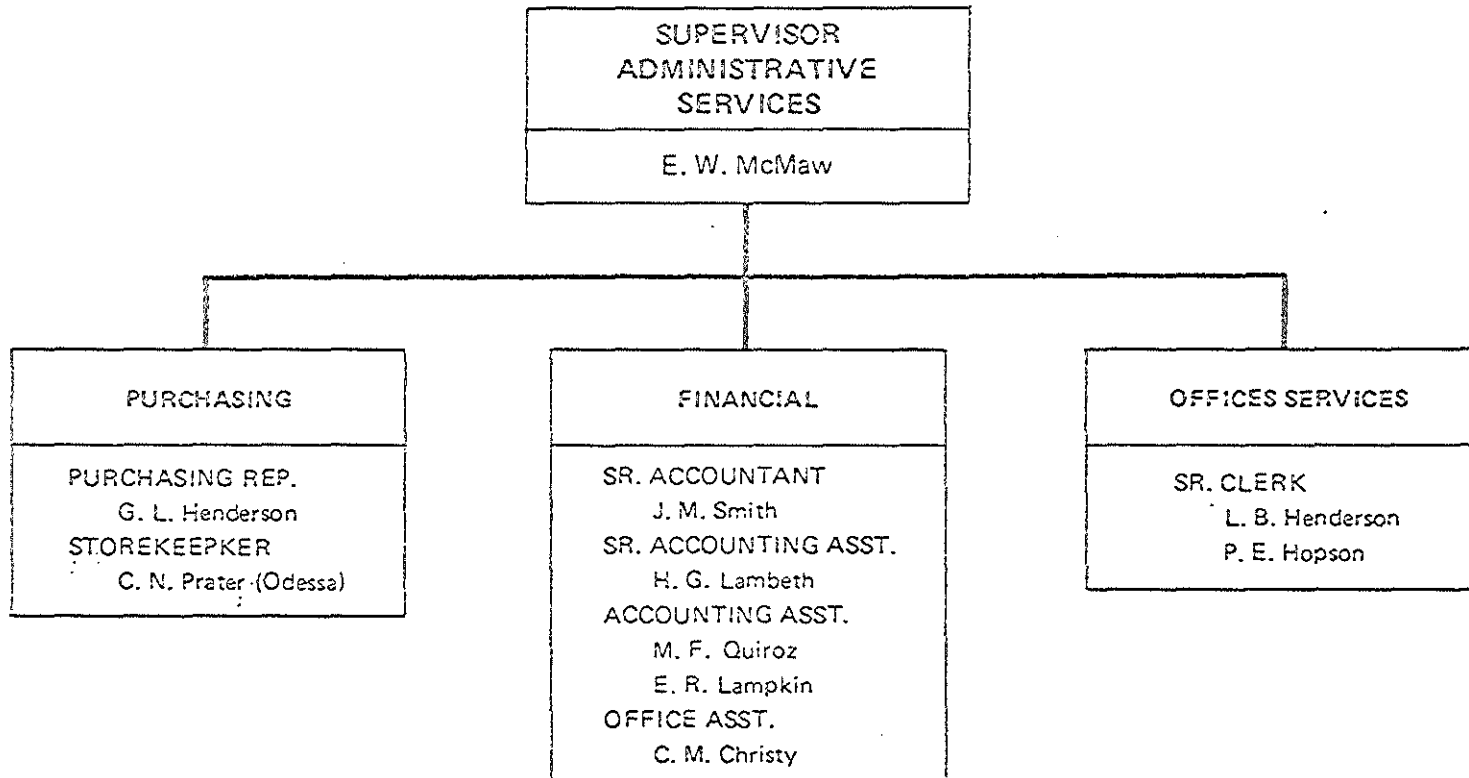
1) Alternate in absence of Manager

2) J. H. Singleton - Special Assignment

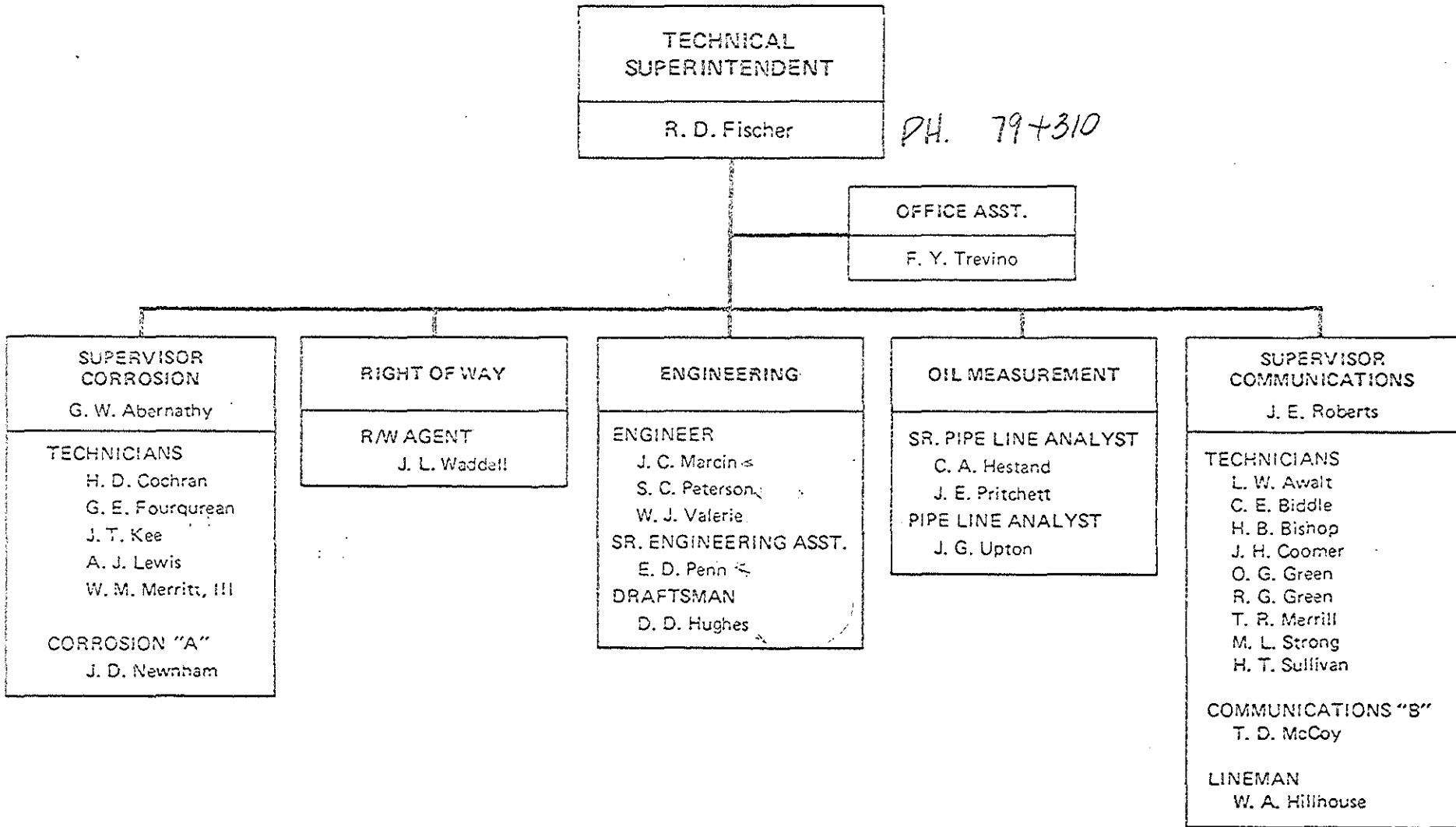
SHELL PIPE LINE CORPORATION
CENTRAL DIVISION
EMPLOYEE RELATIONS



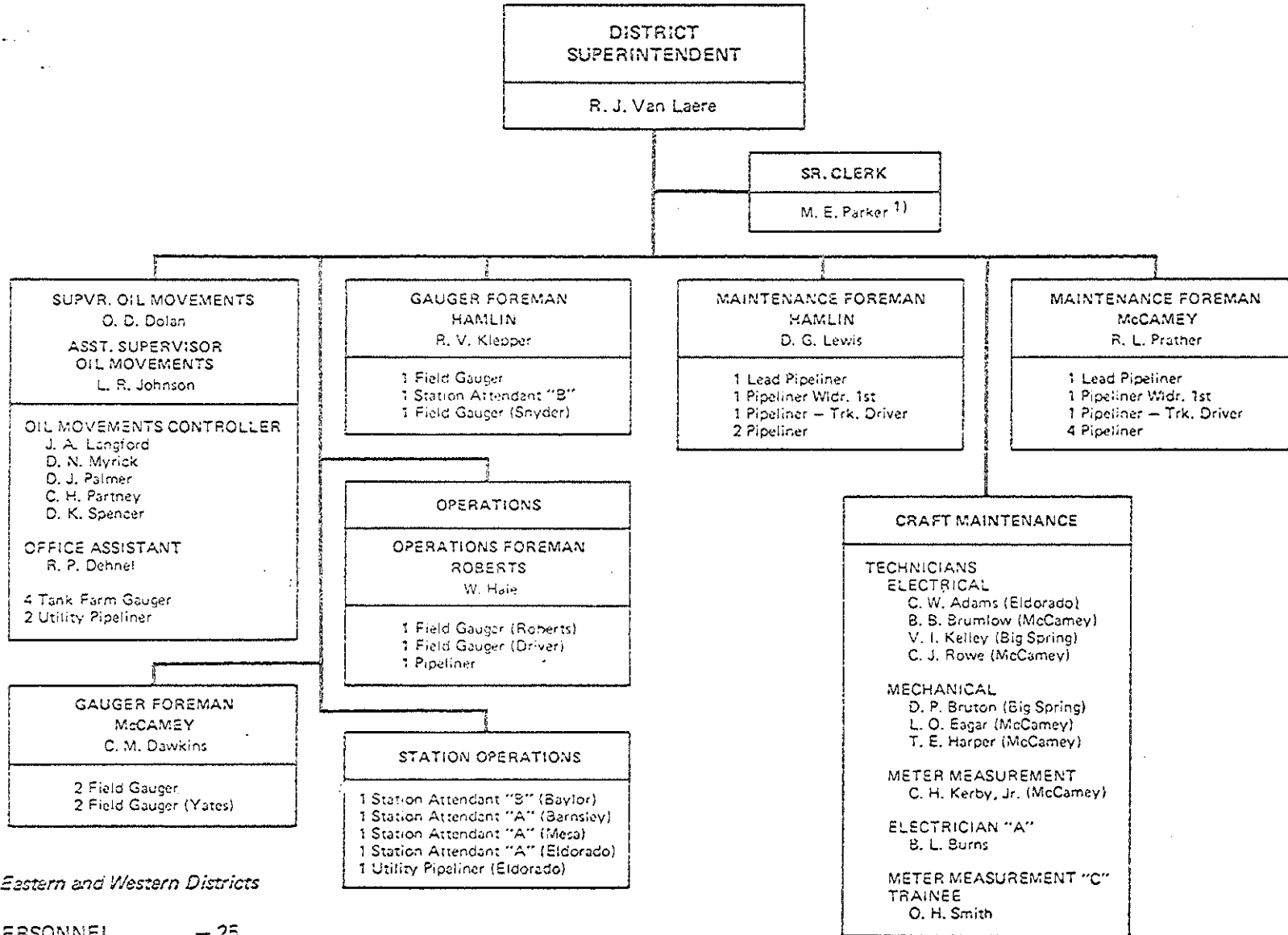
SHELL PIPE LINE CORPORATION
CENTRAL DIVISION
ADMINISTRATIVE SERVICES



**SHELL PIPE LINE CORPORATION
CENTRAL DIVISION**



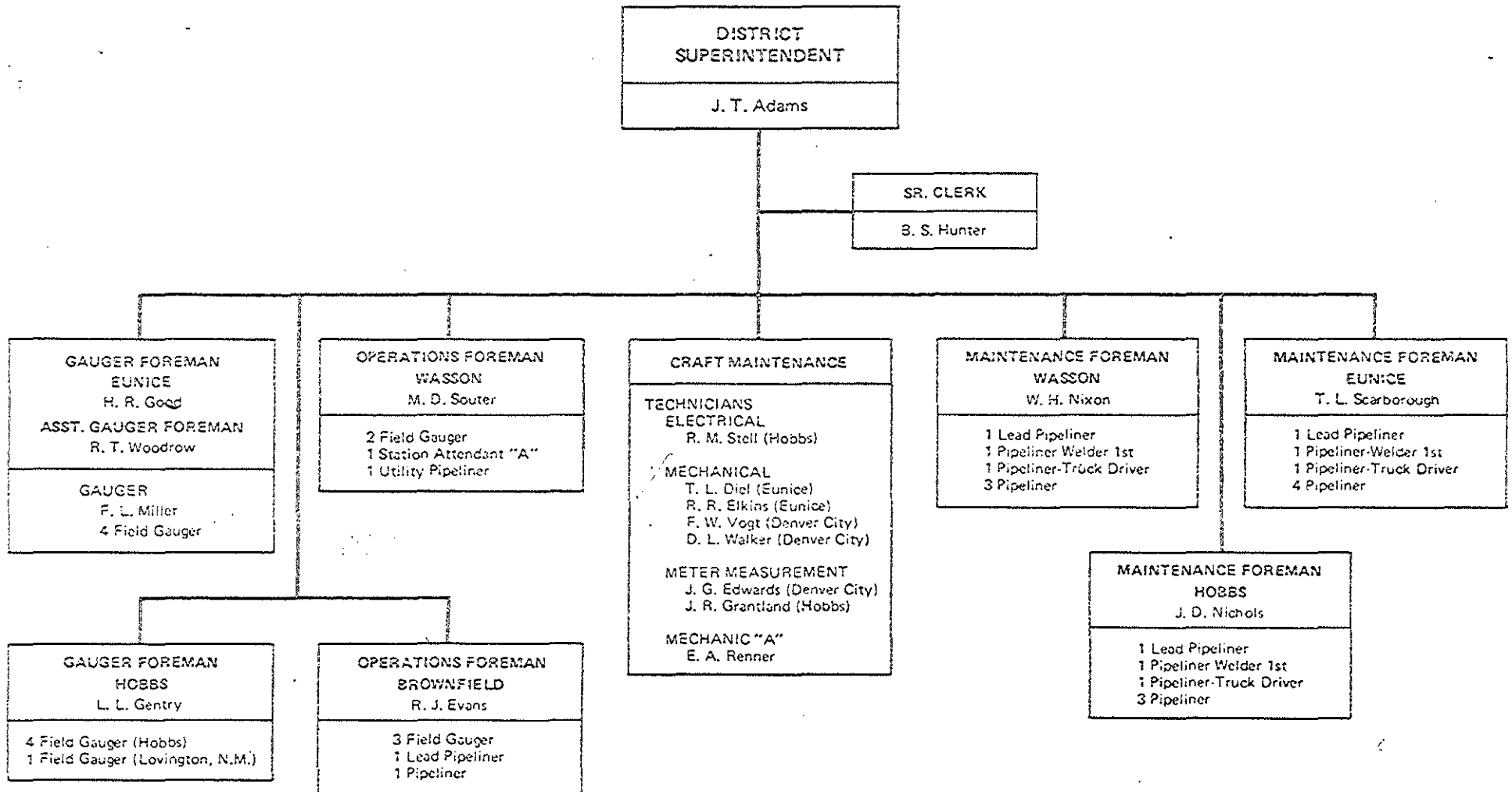
SHELL PIPE LINE CORPORATION CENTRAL DIVISION EASTERN DISTRICT



1) Serves Eastern and Western Districts

STAFF PERSONNEL — 25
 OPERATING PERSONNEL — 33
 TOTAL 58

**SHELL PIPE LINE CORPORATION
CENTRAL DIVISION
NORTHERN DISTRICT**

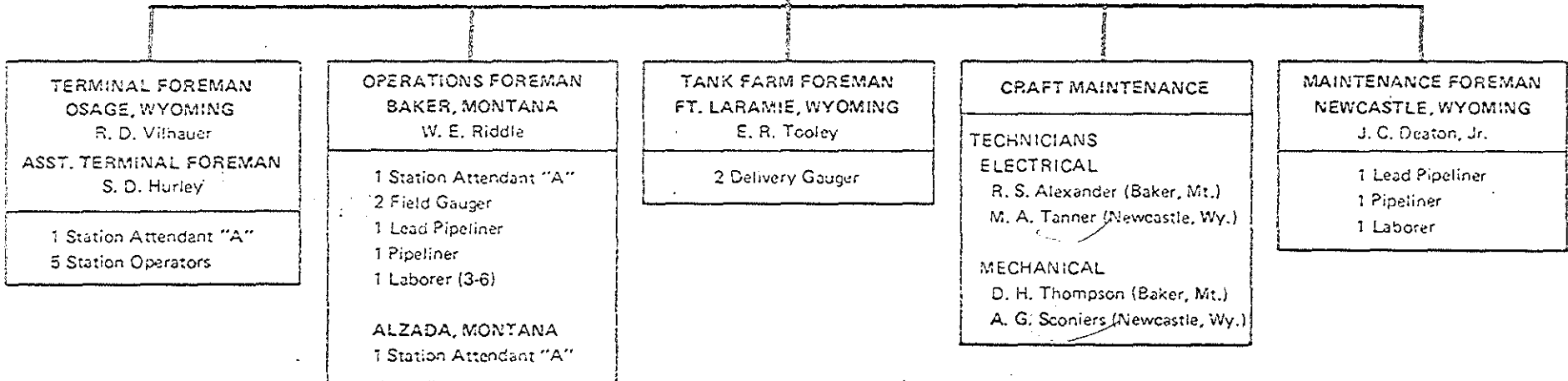


STAFF PERSONNEL - 19
 OPERATING PERSONNEL - 37
 TOTAL - 56

**SHELL PIPE LINE CORPORATION
CENTRAL DIVISION
ROCKY MOUNTAIN DISTRICT**

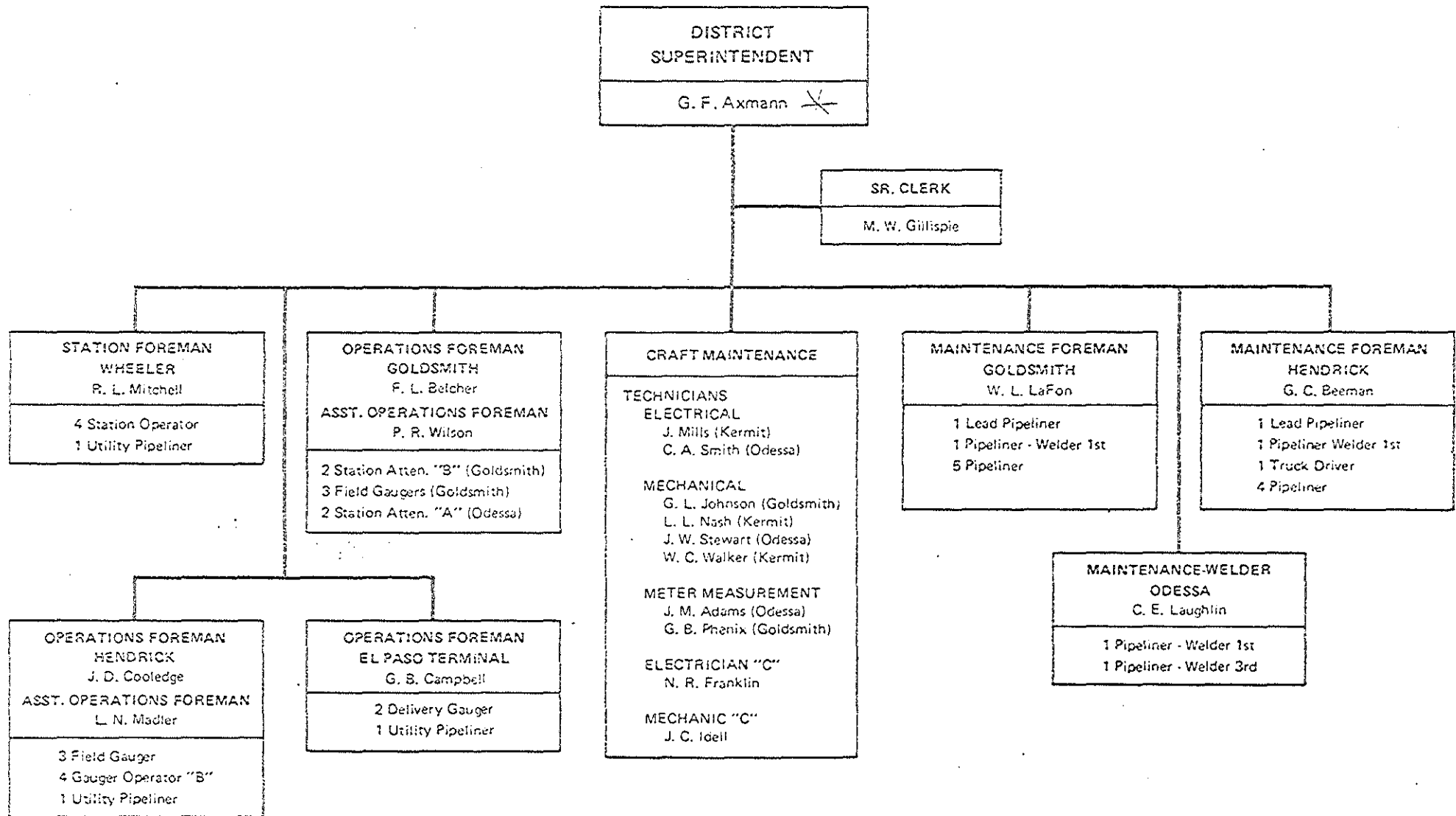
DISTRICT
SUPERINTENDENT
W. C. Ezzell

SR. CLERK
A. Landrigan



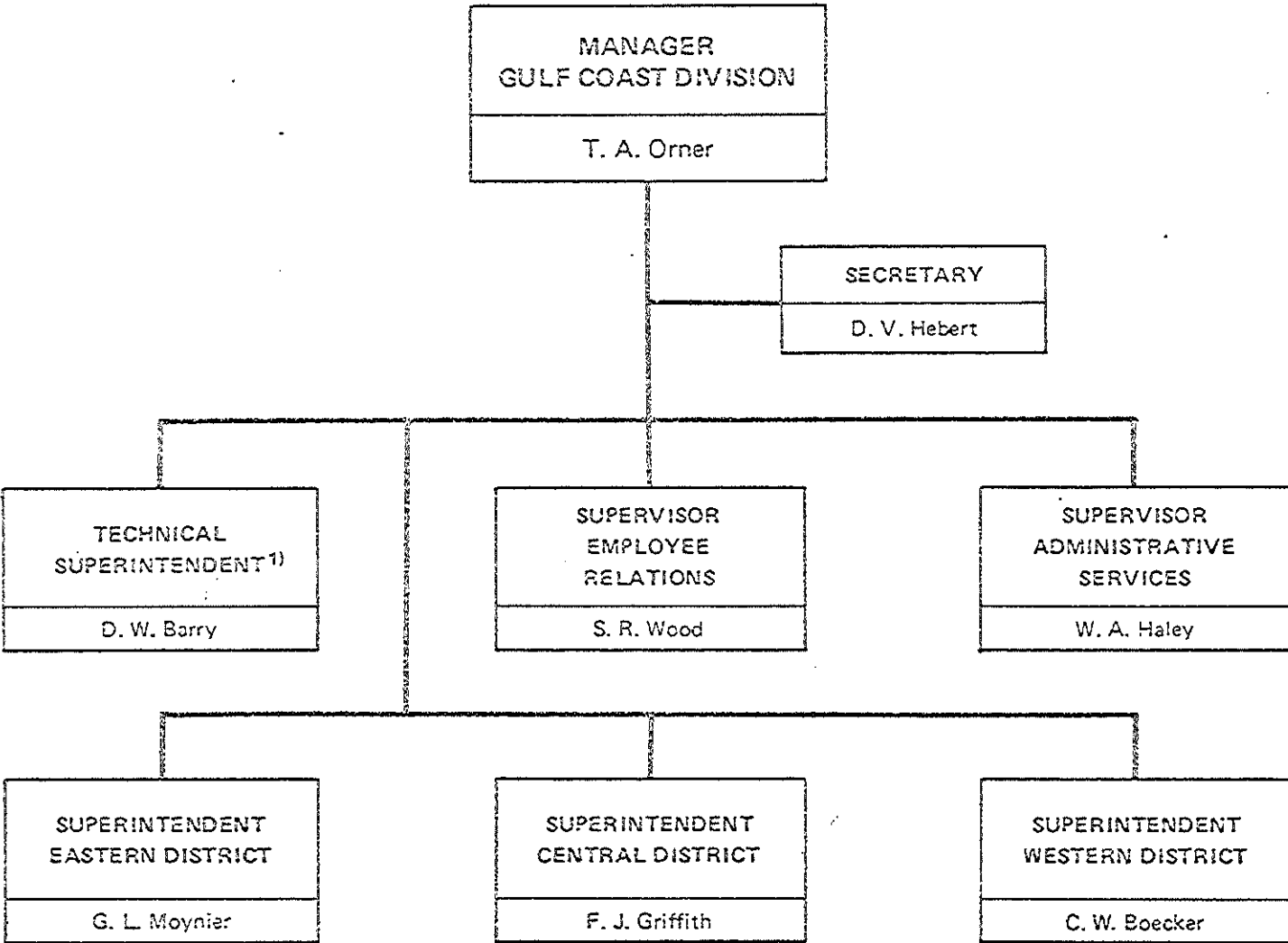
STAFF PERSONNEL - 11
 OPERATING PERSONNEL - 18
 TOTAL - 29

**SHELL PIPE LINE CORPORATION
CENTRAL DIVISION
WESTERN DISTRICT**



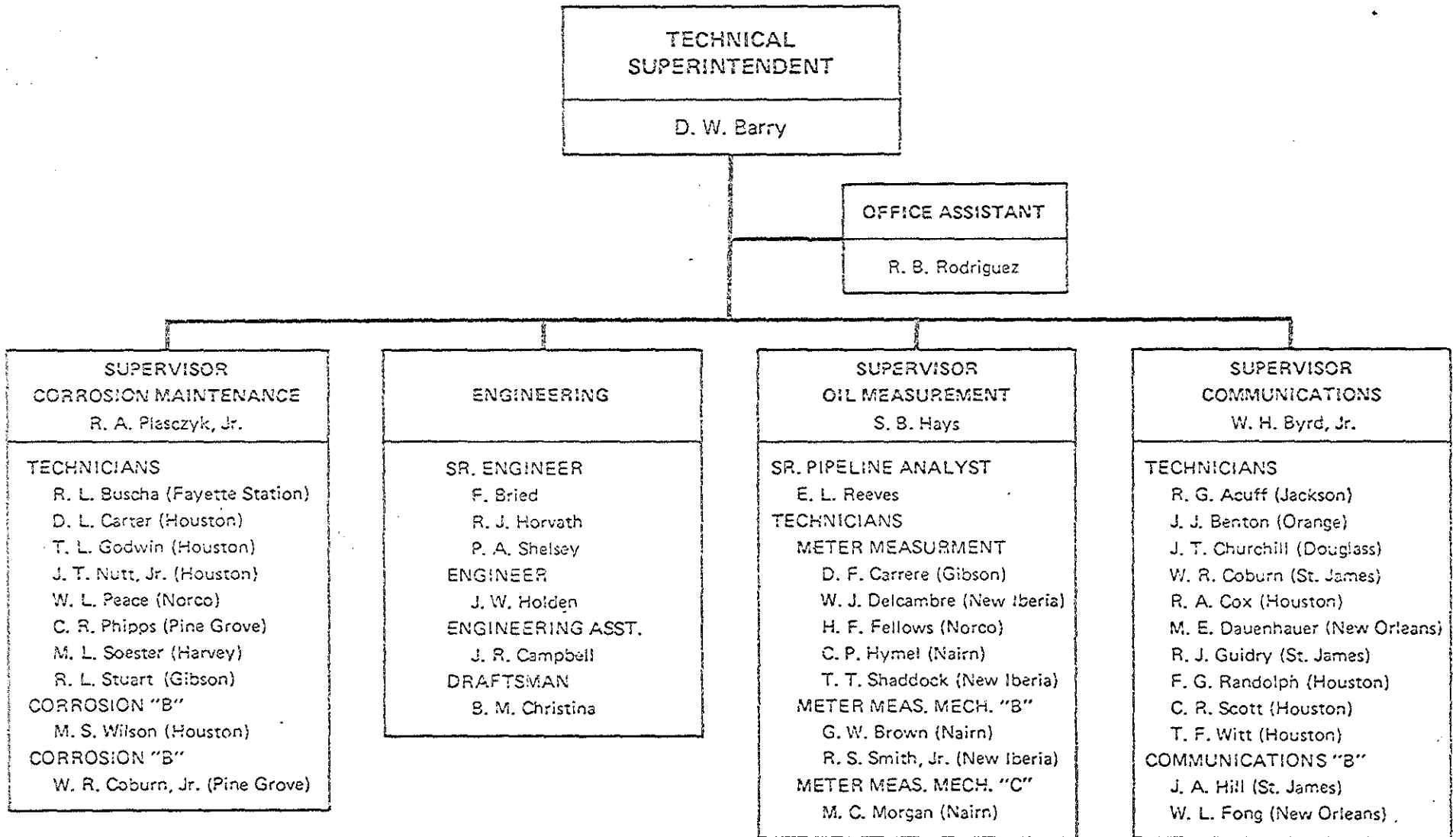
STAFF PERSONNEL	—	22
OPERATING PERSONNEL	—	39
TOTAL		<u>61</u>

SHELL PIPE LINE CORPORATION
GULF COAST DIVISION



1) Alternate in absence of Manager

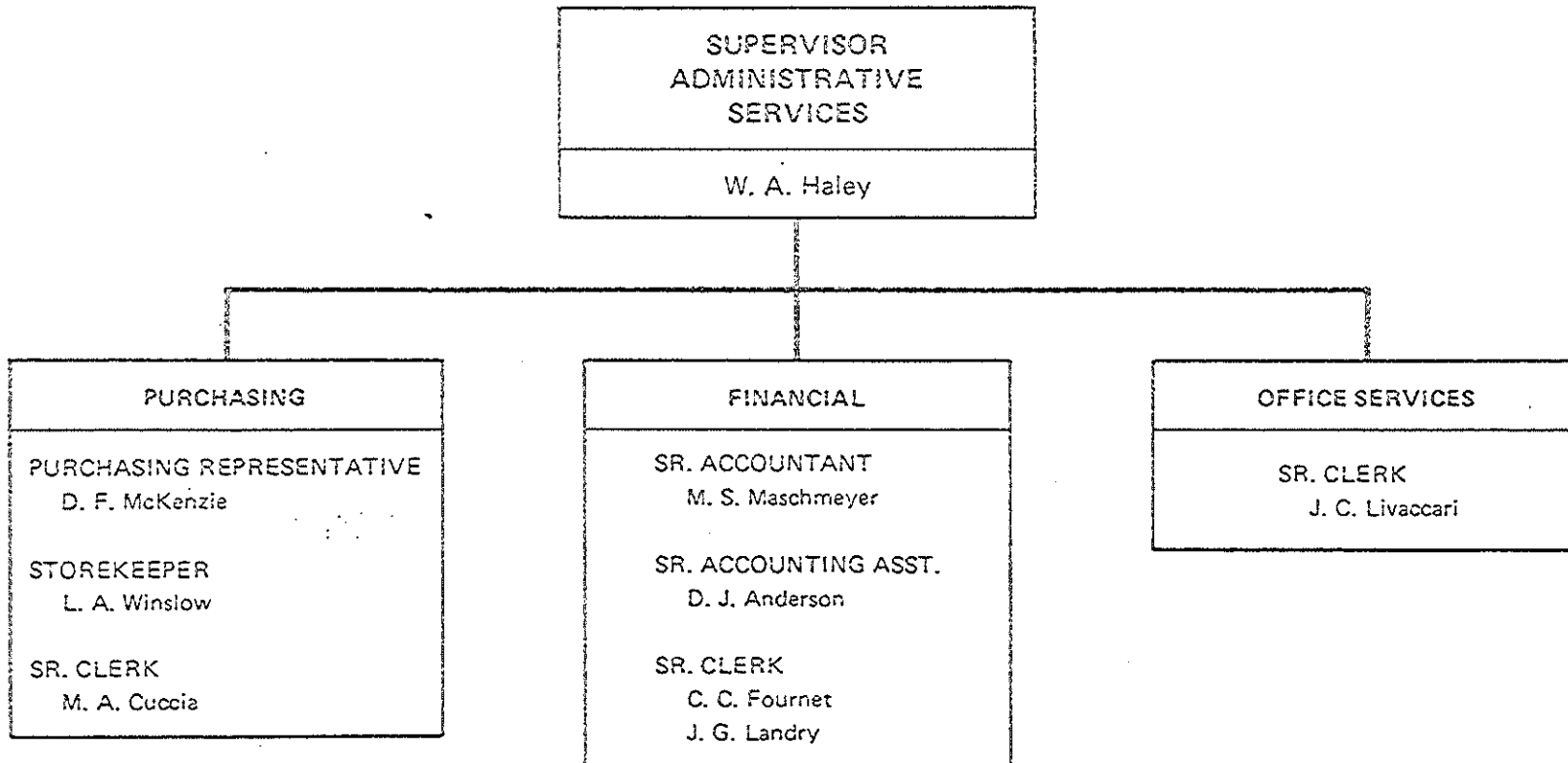
**SHELL PIPE LINE CORPORATION
GULF COAST DIVISION
TECHNICAL SECTION**



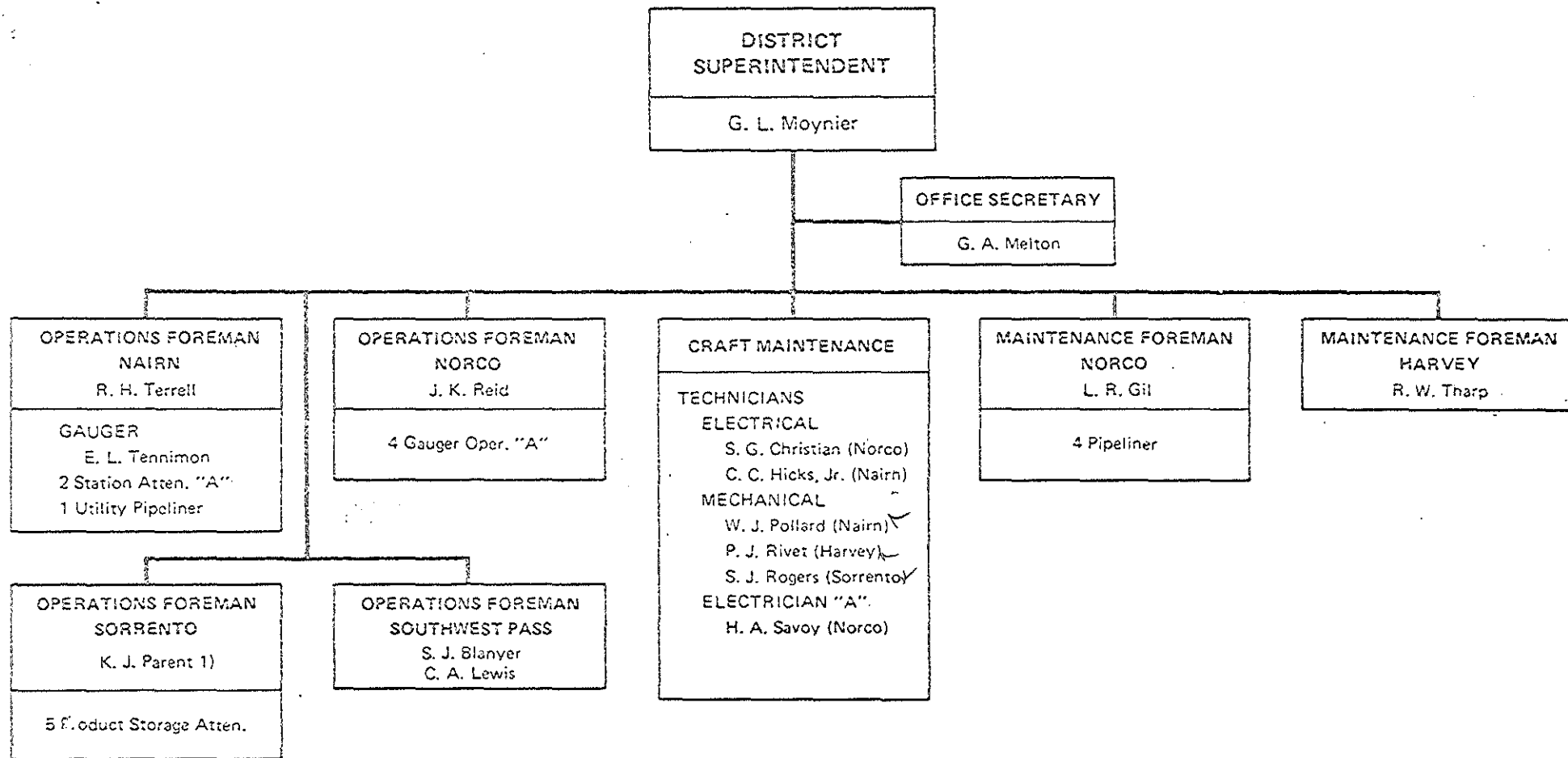
SHELL PIPE LINE CORPORATION
GULF COAST DIVISION
EMPLOYEE RELATIONS

SUPERVISOR EMPLOYEE RELATIONS
S. R. Wood
SAFETY REPRESENTATIVE J. R. Prince EMPLOYEE RELATIONS ASST. M. E. Thompson

SHELL PIPE LINE CORPORATION
GULF COAST DIVISION
ADMINISTRATIVE SERVICES



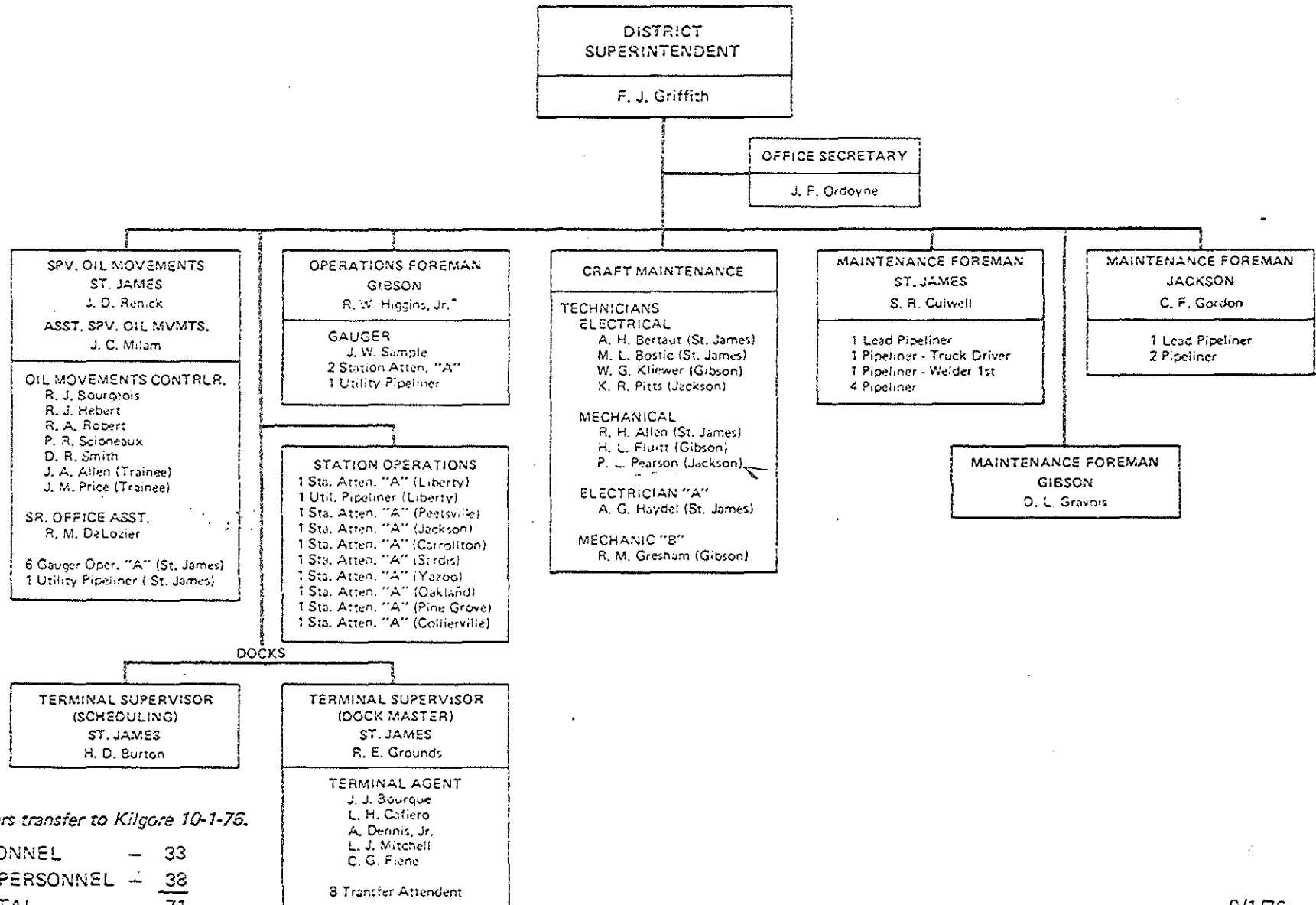
**SHELL PIPE LINE CORPORATION
GULF COAST DIVISION
EASTERN DISTRICT**



1) Extended Inspection Assignment – D. P. Louviere, Relief Operations Foreman

STAFF PERSONNEL	–	18
OPERATING PERSONNEL	–	<u>16</u>
TOTAL	–	34

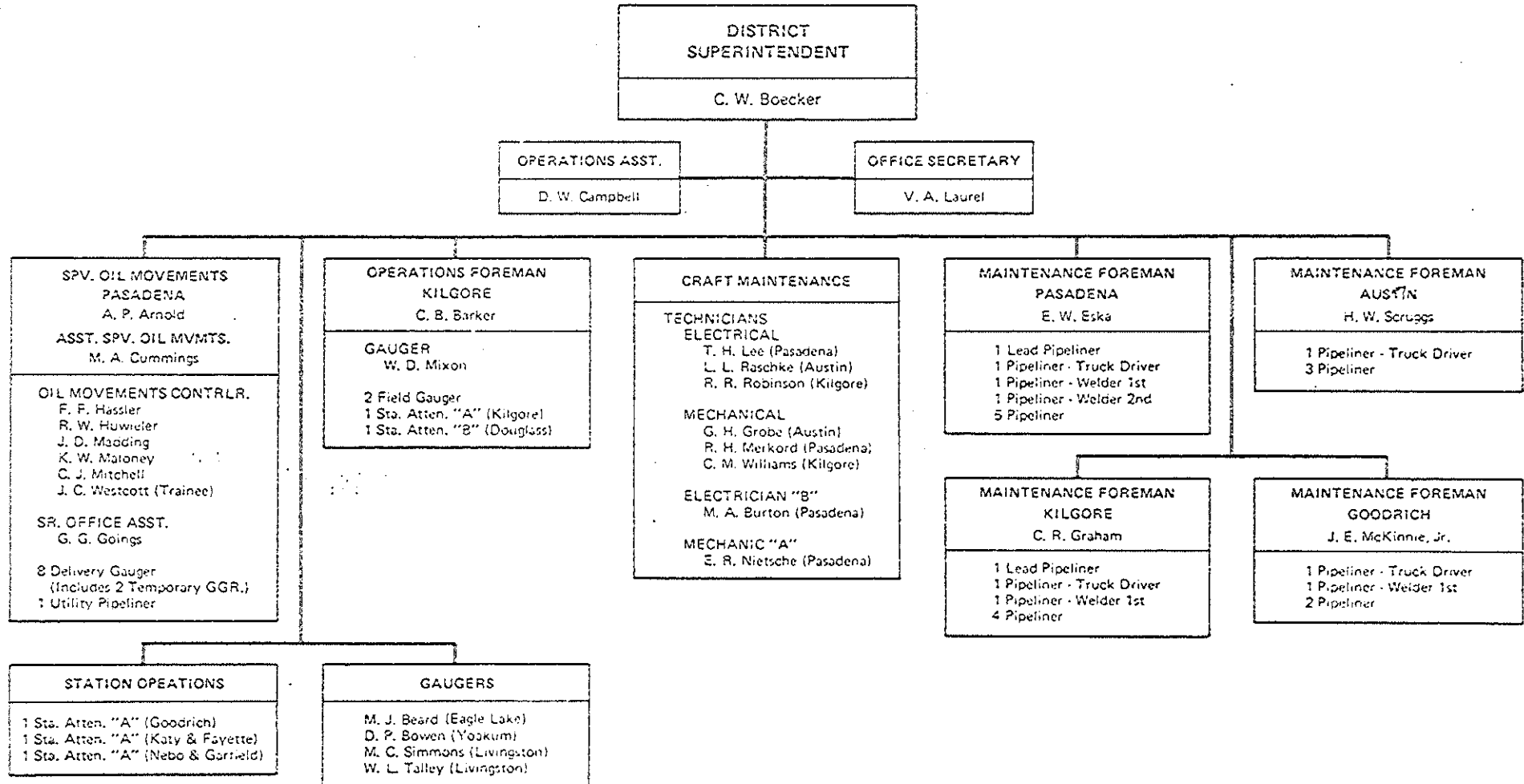
SHELL PIPE LINE CORPORATION GULF COAST DIVISION CENTRAL DISTRICT



*T. E. Chambers transfer to Kilgore 10-1-76.

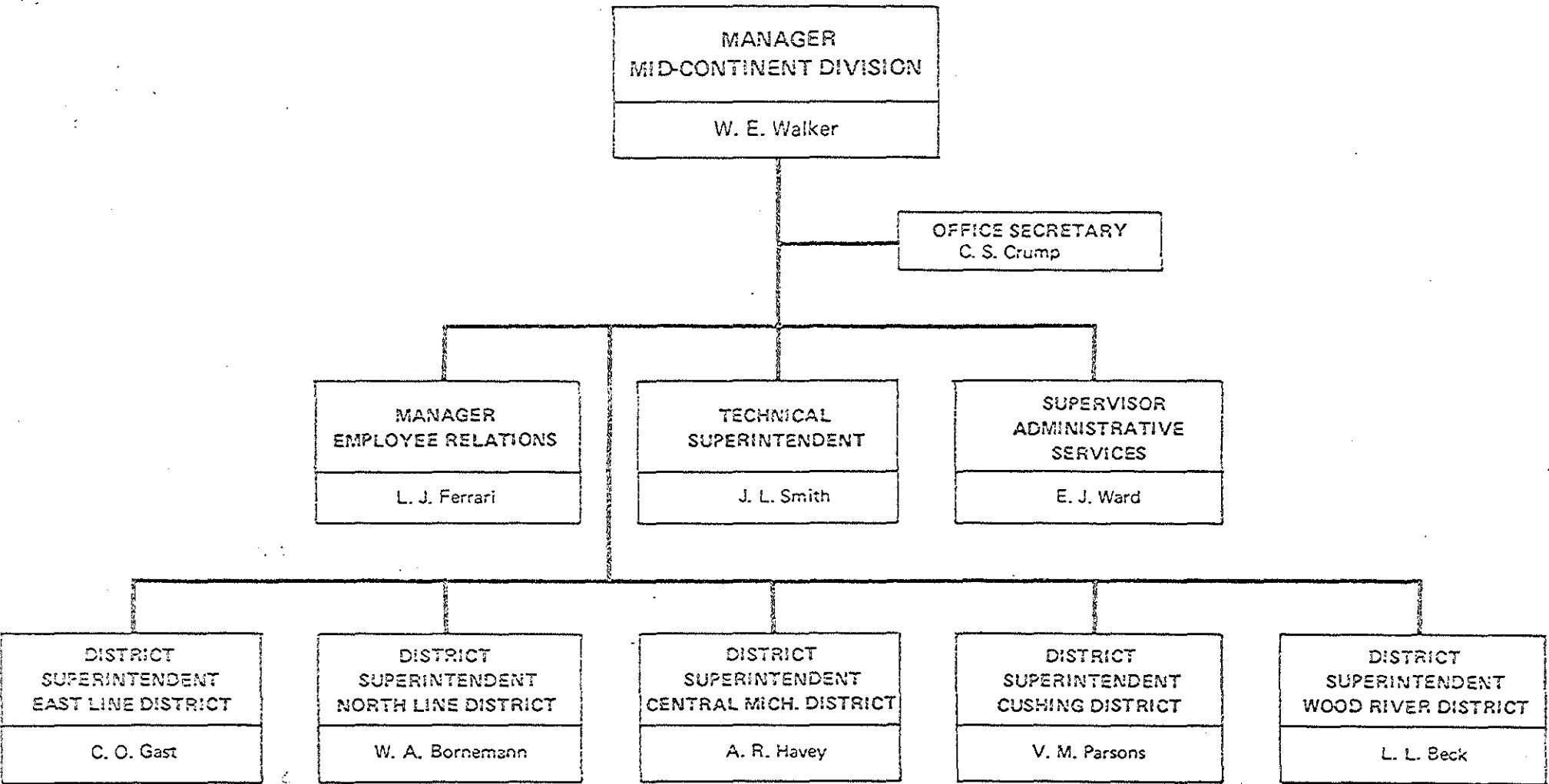
STAFF PERSONNEL	—	33
OPERATING PERSONNEL	—	38
TOTAL	—	71

SHELL PIPE LINE CORPORATION GULF COAST DIVISION WESTERN DISTRICT

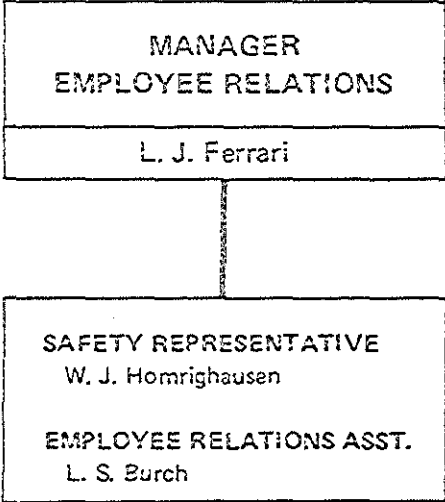


STAFF PERSONNEL	- 29
OPERATING PERSONNEL	- 37
TOTAL	- 66

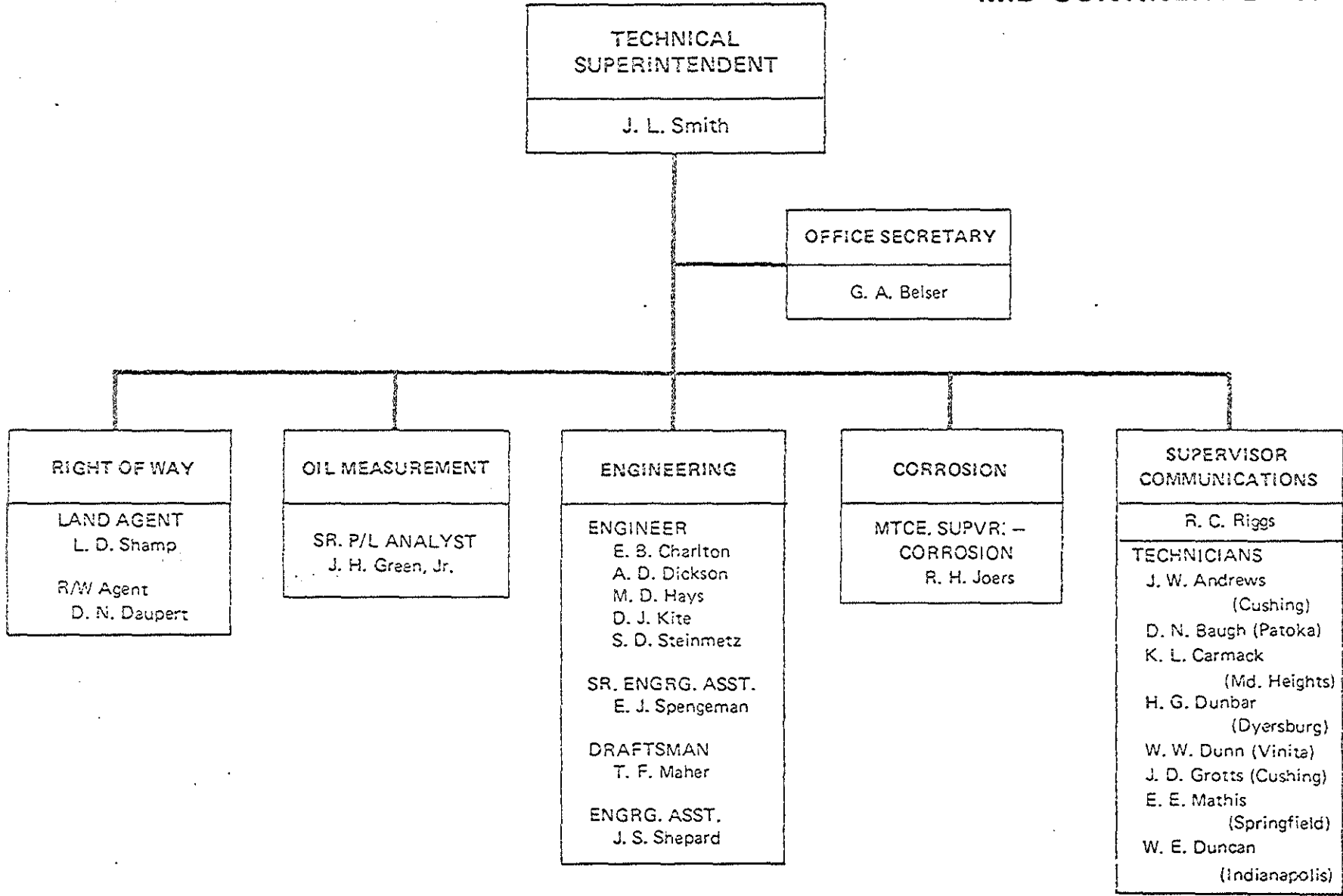
SHELL PIPE LINE CORPORATION
MID-CONTINENT DIVISION



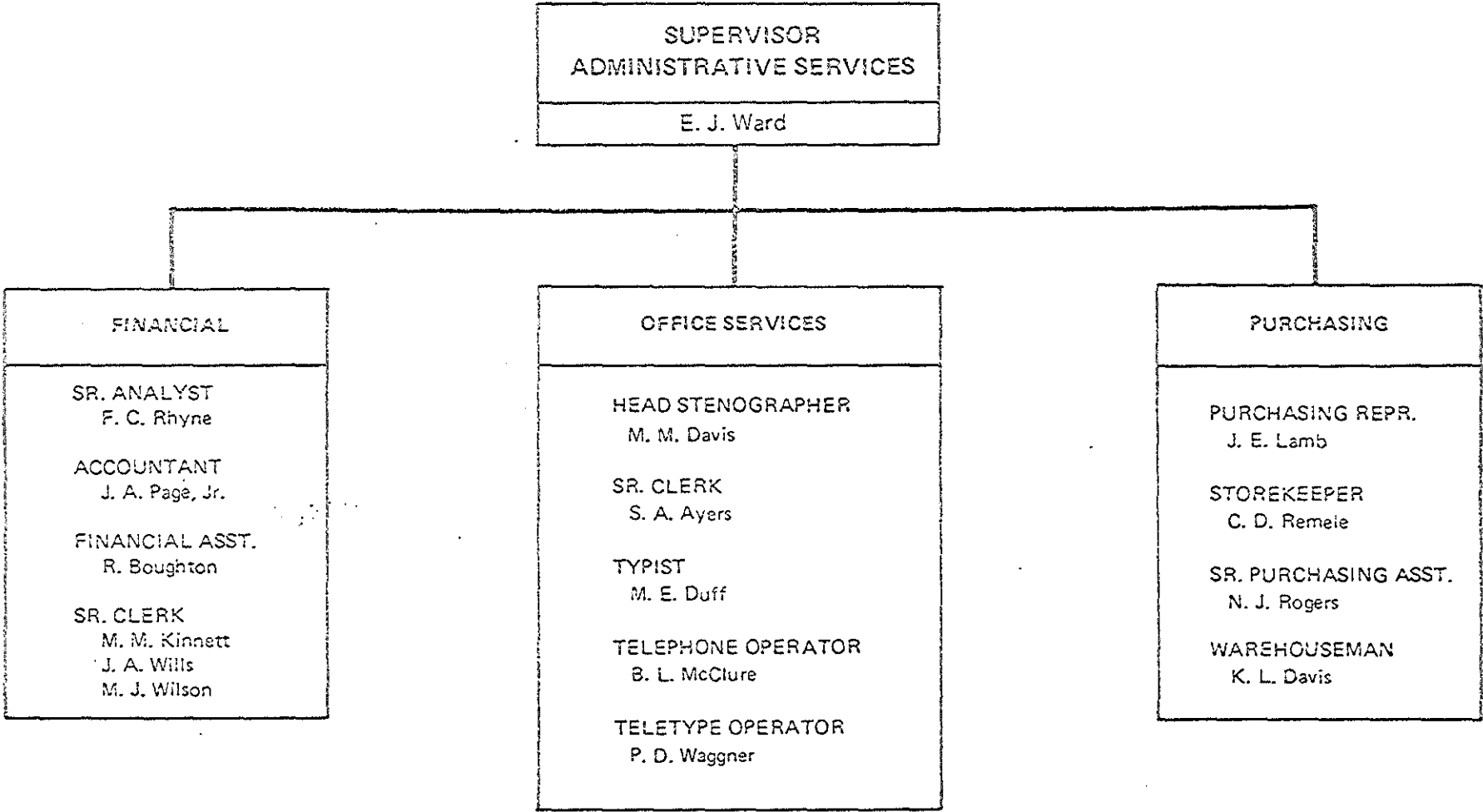
SHELL PIPE LINE CORPORATION
MID-CONTINENT DIVISION
EMPLOYEE RELATIONS



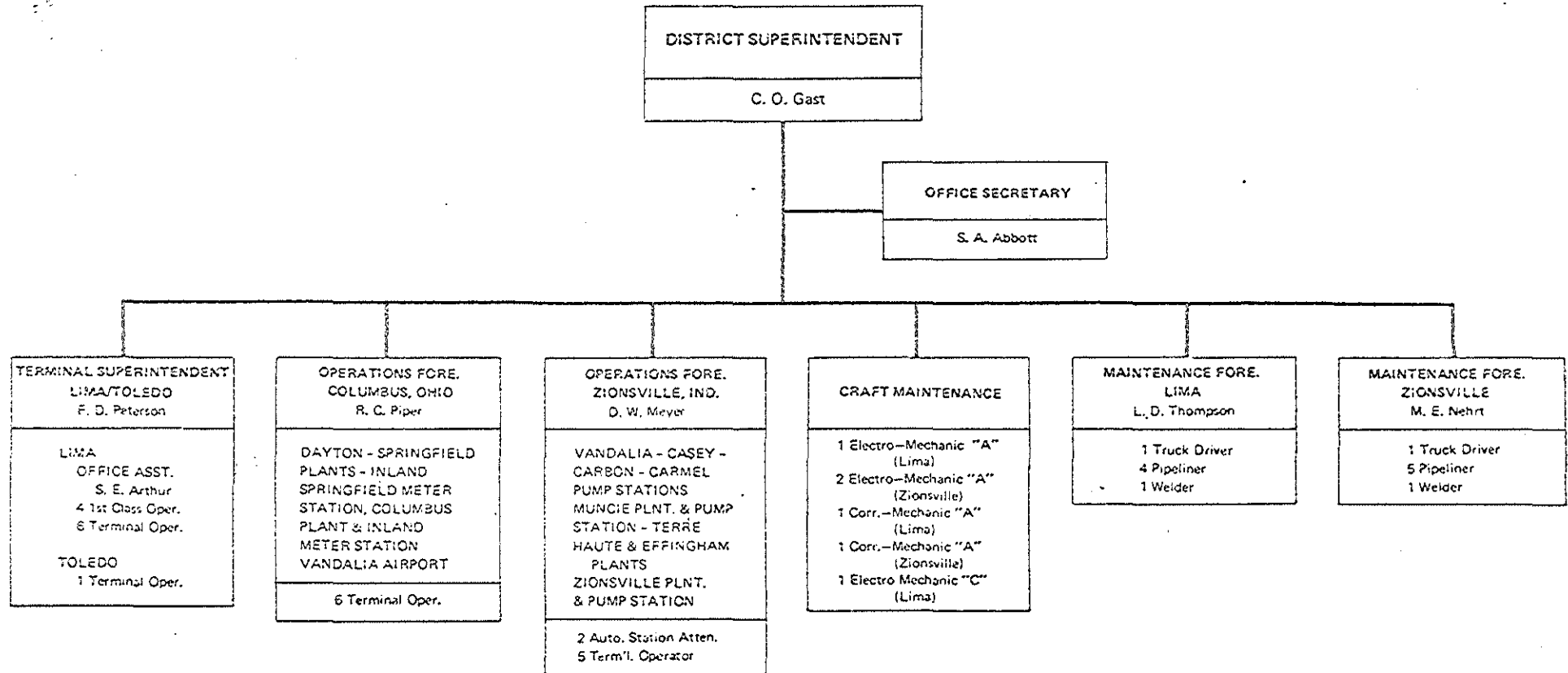
**SHELL PIPE LINE CORPORATION
MID-CONTINENT DIVISION**



SHELL PIPE LINE CORPORATION
MID-CONTINENT DIVISION
ADMINISTRATIVE SERVICES

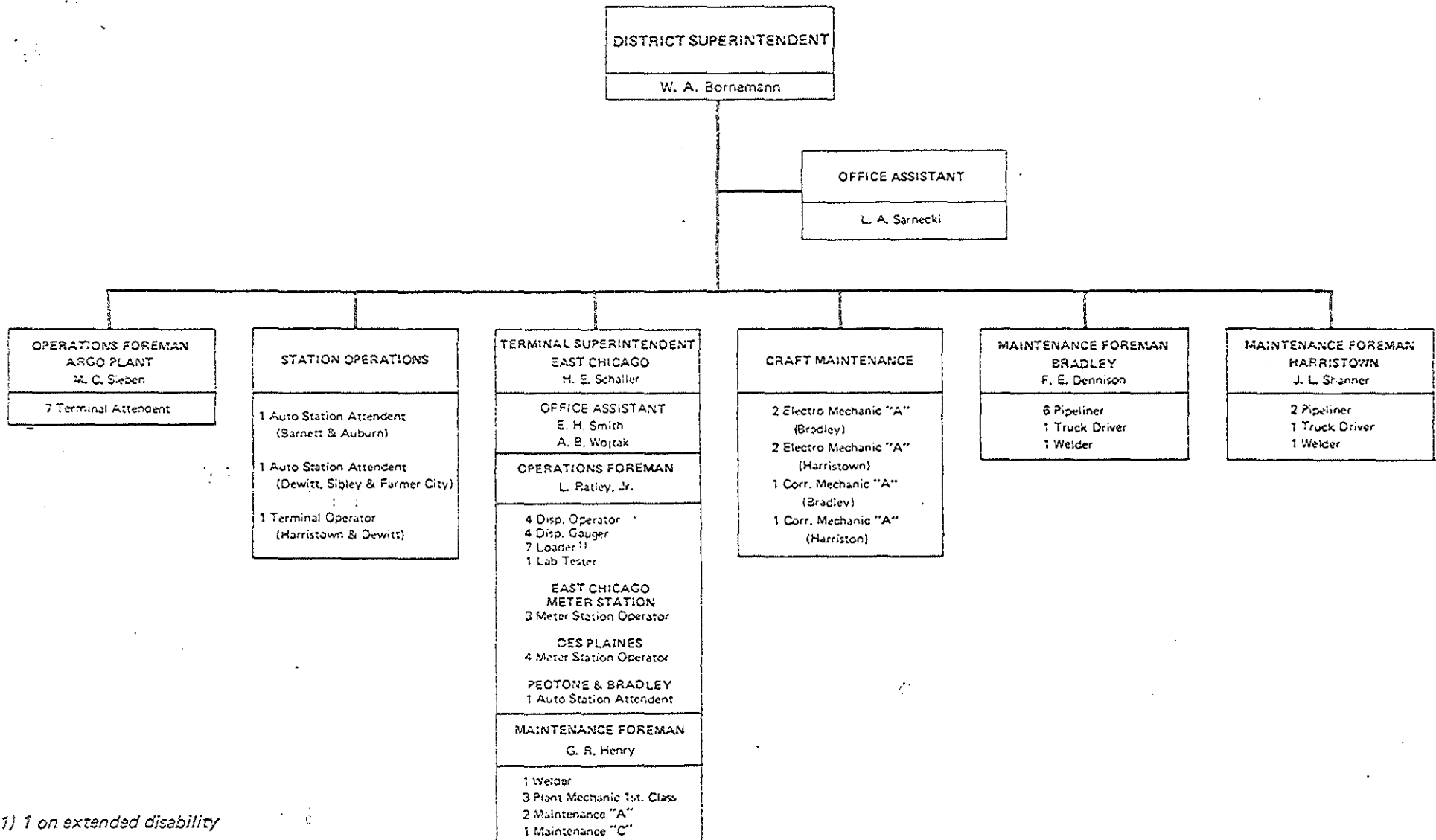


SHELL PIPE LINE CORPORATION MID-CONTINENT DIVISION EAST LINE DISTRICT



STAFF PERSONNEL	—	8
OPERATING PERSONNEL	—	43
TOTAL	—	51

**SHELL PIPE LINE CORPORATION
MID-CONTINENT DIVISION
NORTH LINE DISTRICT**



1) 1 on extended disability

STAFF PERSONNEL	—	10
OPERATING	—	59
TOTAL	—	69

SHELL PIPE LINE CORPORATION
MID-CONTINENT DIVISION
CENTRAL MICHIGAN DISTRICT

DISTRICT SUPERINTENDENT
A. R. Havey

CLERK
C. L. Spencer

OPERATIONS FOREMAN-MARYSVILLE
H. M. Luttrell

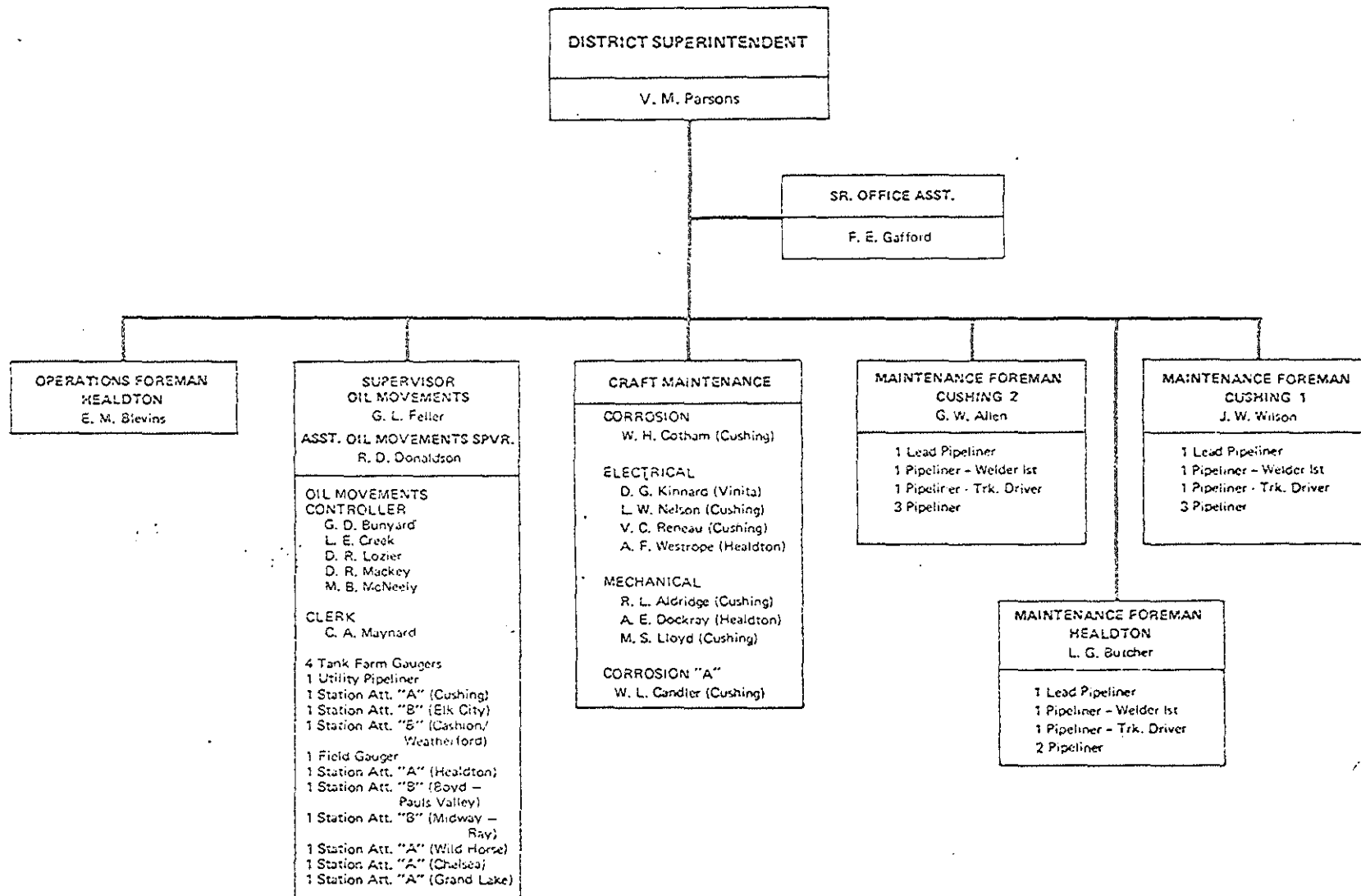
OPERATIONS FOREMAN-KALKASKA
H. L. Freeman
4 Station Operator (Kalkaska)
3 Field Gauger (Kalkaska)
1 Delivery Gauger (Lewiston)

CRAFT MAINTENANCE
KALKASKA
MECHANICAL TECHNICIAN
I. Butler, Jr.
C. F. Hughlett
MTR. MEAS. TECHNICIAN
L. K. Cottrell
E. J. Profrock
ELECTRICAL TECHNICIAN
G. A. Davis
COMMUNICATIONS TECHNICIAN
D. E. Parrish

MAINTENANCE FOREMAN
C. K. Wadkins
1 Lead Pipeliner
1 Pipeliner-Truck Driver
1 Pipeliner Welder 1st
4 Pipeliner

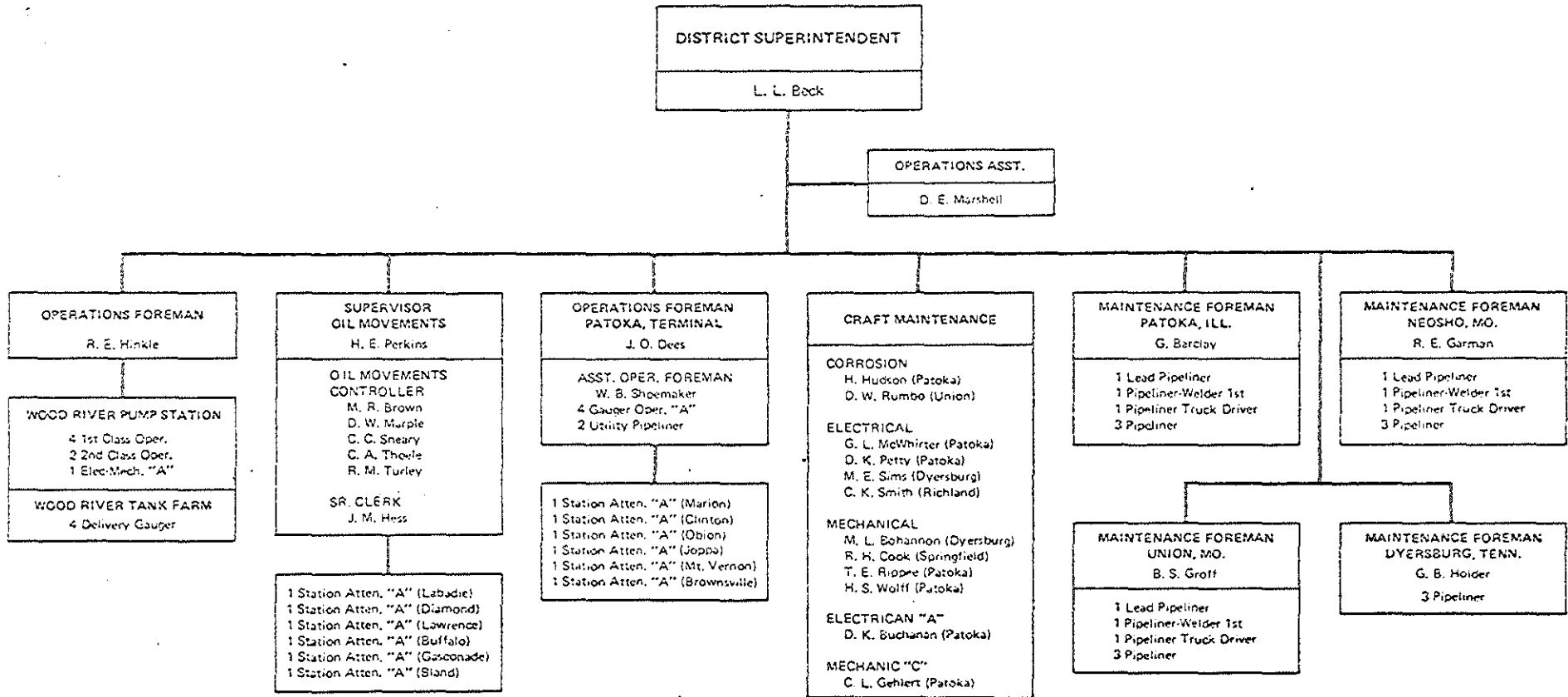
STAFF PERSONNEL — 11
OPERATING PERSONNEL — 15
TOTAL — 26

SHELL PIPE LINE CORPORATION MID-CONTINENT DIVISION CUSHING DISTRICT



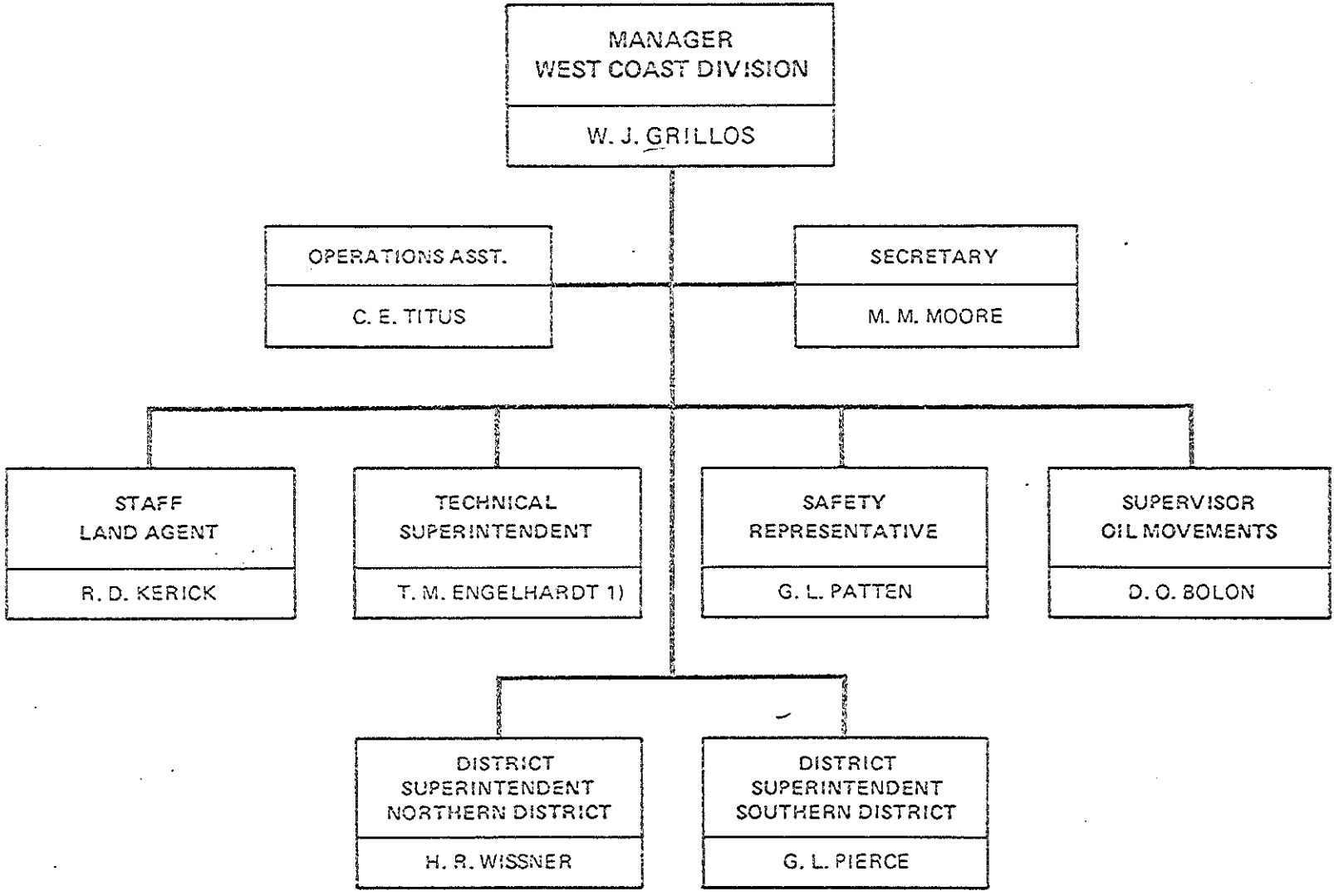
STAFF PERSONNEL	-	23
OPERATING PERSONNEL	-	<u>30</u>
TOTAL	-	53

**SHELL PIPE LINE CORPORATION
MID-CONTINENT DIVISION
WOOD RIVER DISTRICT**



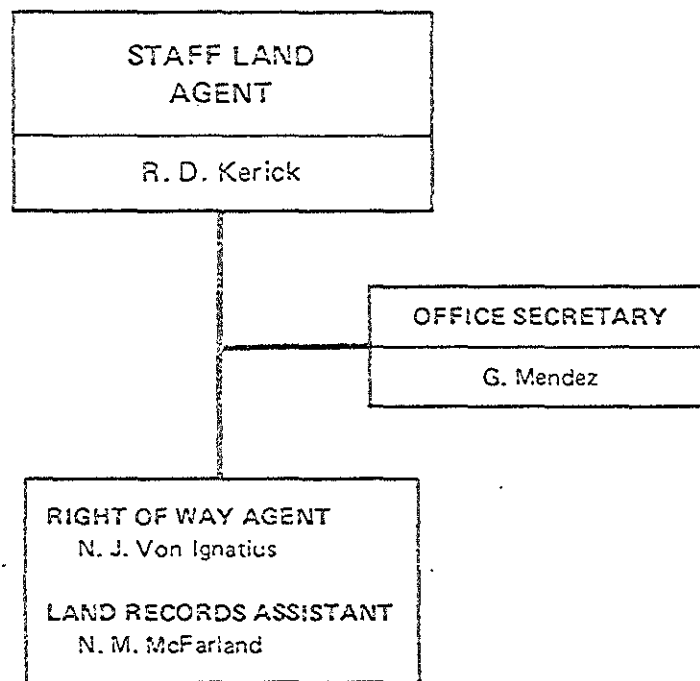
STAFF PERSONNEL — 27
 OPERATING PERSONNEL — 50
 TOTAL — 77

SOC — T&S PIPE LINE OPERATIONS
WEST COAST DIVISIONS

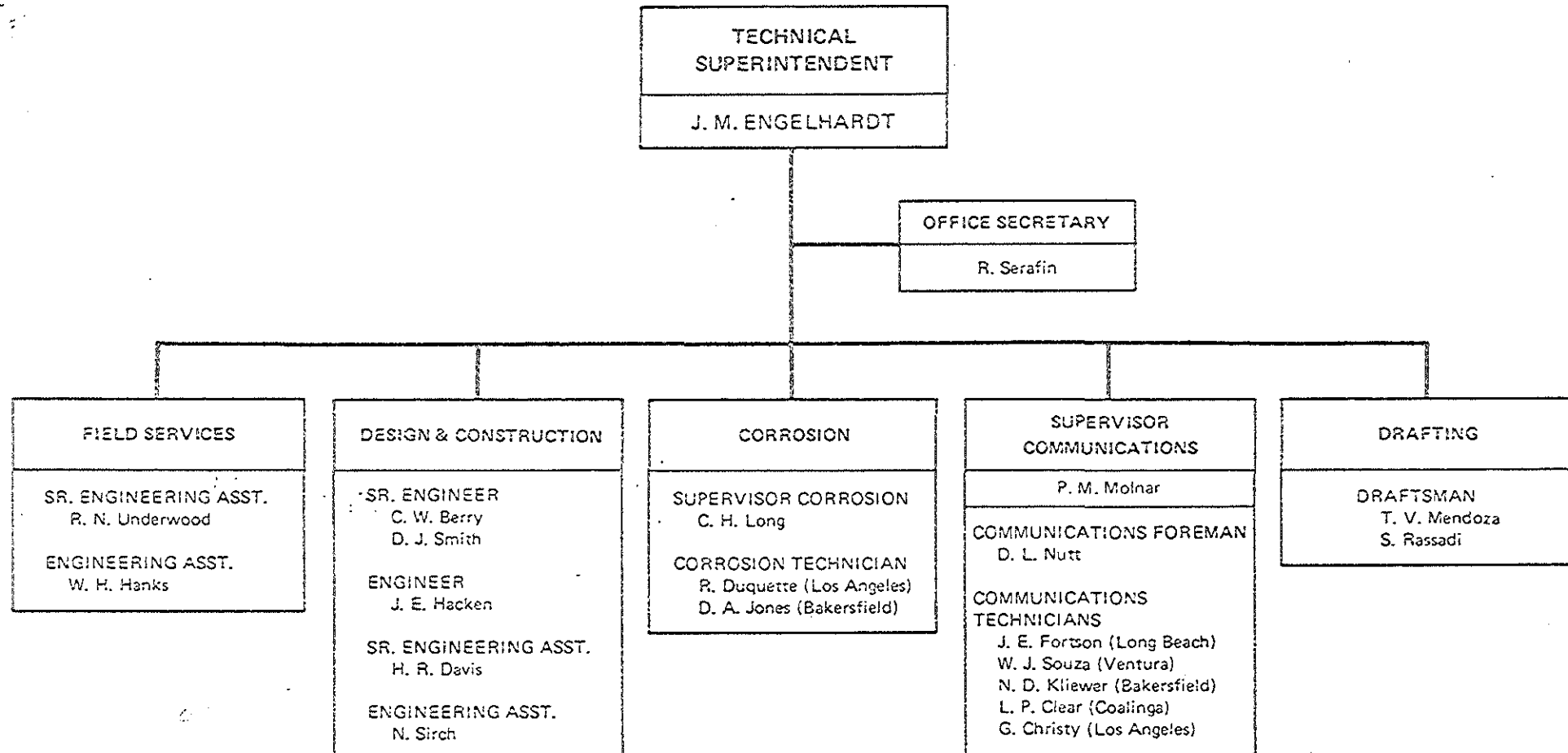


1) Alternate in Absence of Manager

SOC — T&S PIPE LINES
WEST COAST DIVISION
RIGHT OF WAY



SOC — T&S PIPE LINE OPERATIONS WEST COAST DIVISION

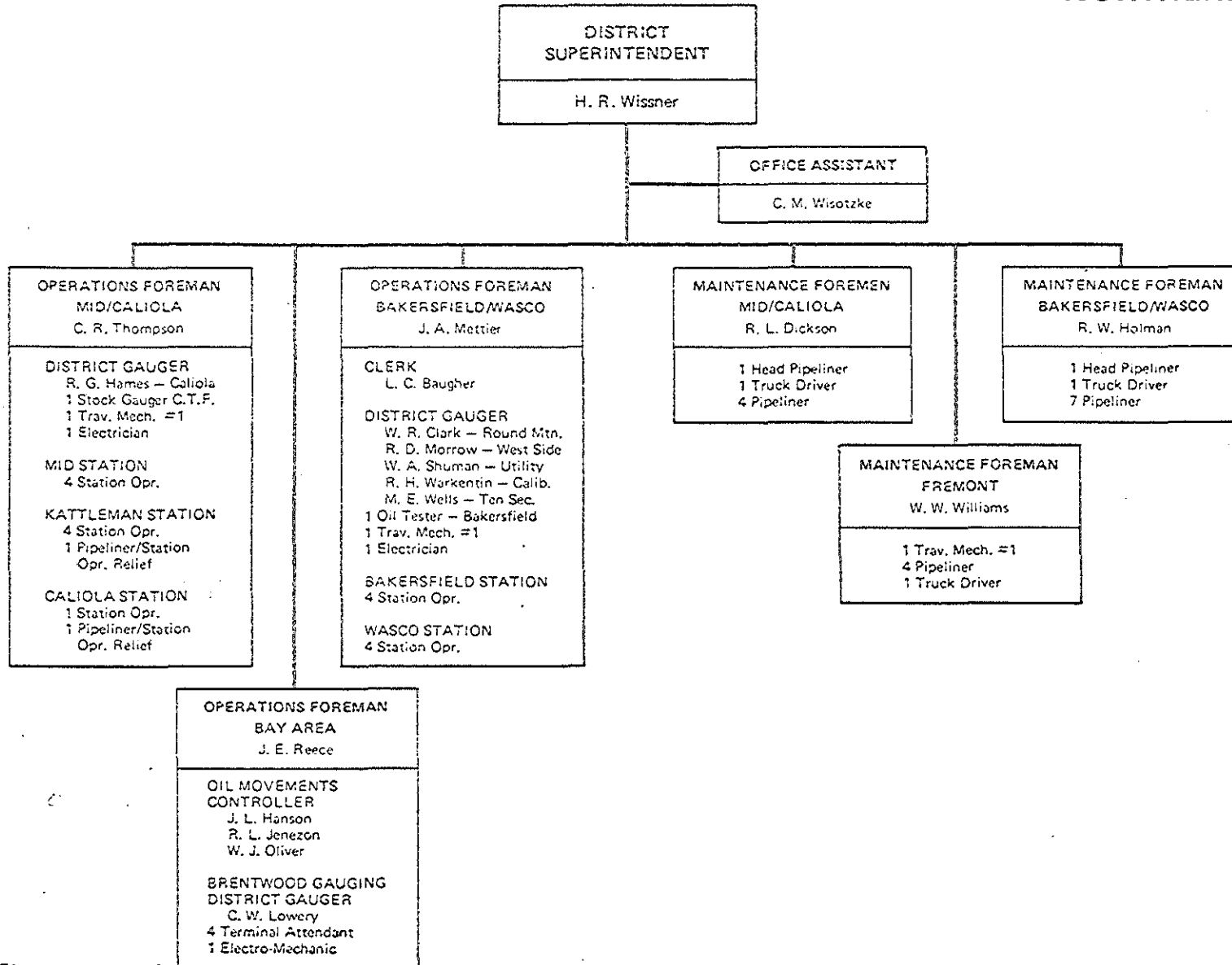


R. L. Wixson — Special Assignment

SOC — T&S PIPE LINES
WEST COAST DIVISION
OIL MOVEMENTS

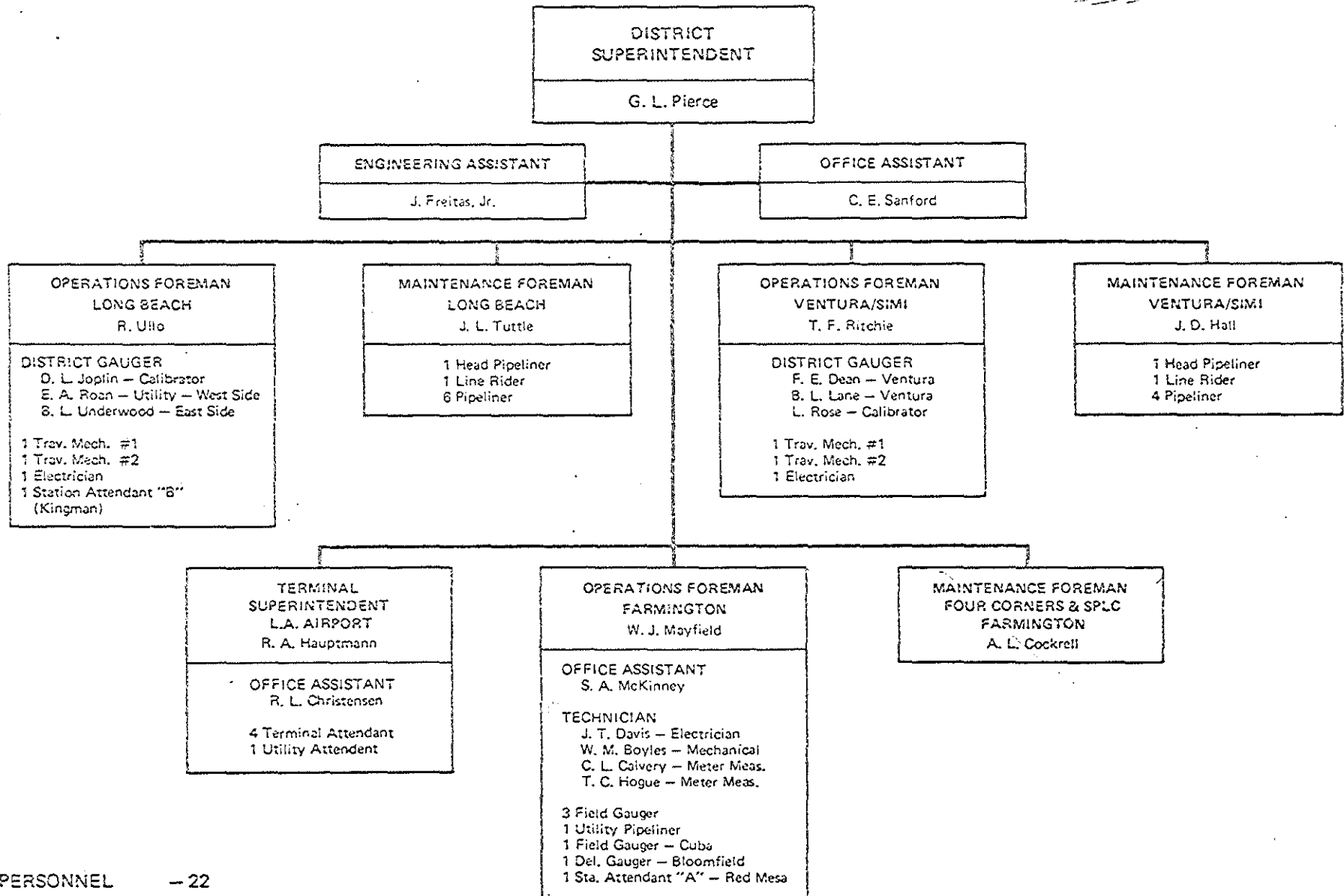
SUPERVISOR OIL MOVEMENTS
D. O. Bolon
OIL MOVEMENTS SCHEDULER B. G. Craig J. W. Shannon C. F. Torrey
OIL MOVEMENTS CONTROLLER R. E. Boyer C. L. Manning C. L. Nicholas R. E. Waters C. H. Wells
PIPE LINE ANALYST-MEAS. W. L. Hull
OFFICE ASSISTANT P. W. Tathwell

**SOC — T&S PIPE LINES
WEST COAST DIVISION
NORTHERN DISTRICT**



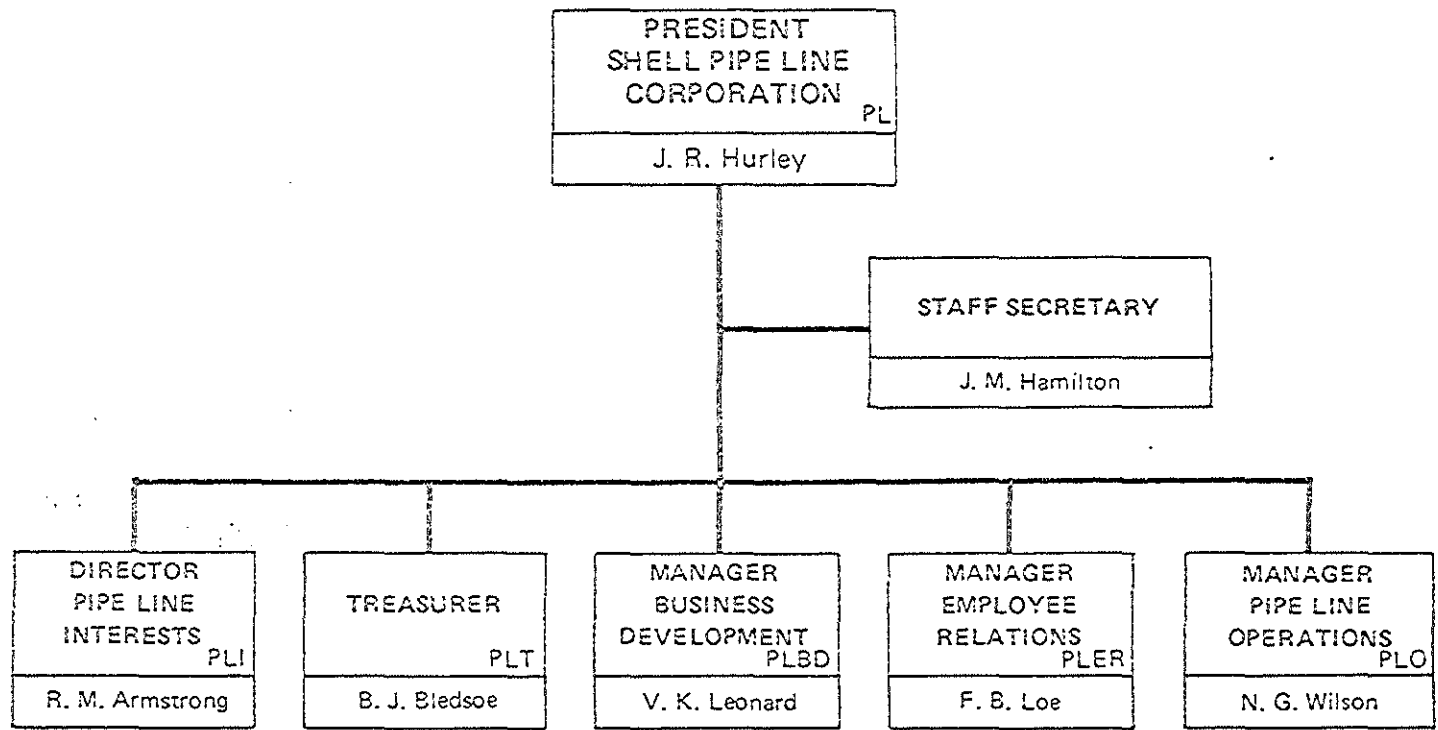
STAFF PERSONNEL — 19
OPERATING PERSONNEL — 52
TOTAL 71

**SOC — T&S PIPE LINES
WEST COAST DIVISION
SOUTHERN DISTRICT**



STAFF PERSONNEL — 22
 OPERATING PERSONNEL — 33
 TOTAL — 55

SHELL PIPE LINE CORPORATION
PIPE LINE ADMINISTRATION



SHELL PIPE LINE CORPORATION
PIPE LINE INTERESTS

